

General Information

Location: MASHHAD IRN
ICAO/IATA: OIMM / MHD
Lat/Long: N36° 14' 02.9998", E059° 38' 41.9999"
Elevation: 3266 ft

Airport Use: Public
Daylight Savings: Observed
UTC Conversion: -3:30 = UTC
Magnetic Variation: 4.0° E

Fuel Types: 100 Octane (LL), Jet A-1
Customs: Yes
Airport Type: IFR
Landing Fee: No
Control Tower: Yes
Jet Start Unit: No
LLWS Alert: No
Beacon: Yes

Sunrise: 0237 Z
Sunset: 1255 Z

Runway Information

Runway: 13L
Length x Width: 12500 ft x 148 ft
Surface Type: asphalt
TDZ-Elev: 3228 ft
Lighting: Edge, ALS
Stopway: 991 ft

Runway: 13R
Length x Width: 12861 ft x 148 ft
Surface Type: asphalt
TDZ-Elev: 3234 ft
Lighting: Edge, ALS
Stopway: 984 ft

Runway: 31L
Length x Width: 12861 ft x 148 ft
Surface Type: asphalt
TDZ-Elev: 3266 ft
Lighting: Edge
Stopway: 971 ft

Runway: 31R
Length x Width: 12500 ft x 148 ft
Surface Type: asphalt
TDZ-Elev: 3260 ft
Lighting: Edge, ALS
Stopway: 994 ft

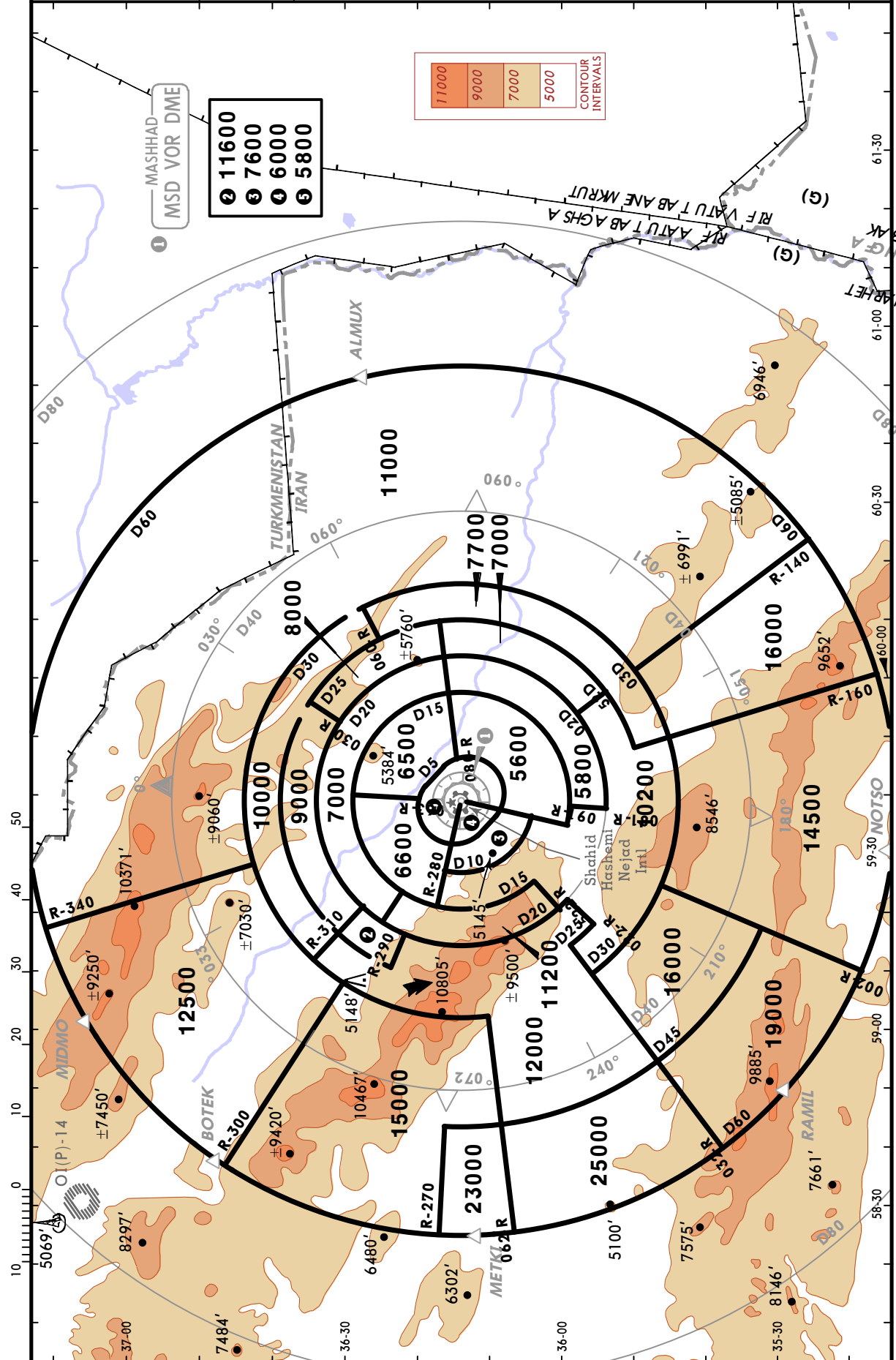
Communication Information

ATIS: 126.400
Mashhad Tower: 25.780 Military
Mashhad Tower: 118.100
Mashhad Ground: 121.700
Mashhad Ground: 121.900
Mashhad Approach: 35.380 Military
Mashhad Approach: 127.300
Mashhad Radar: 35.380 Military
Mashhad Radar: 127.300

OIMM/MHD SHAHID HASHEMI NEJAD INTL

JEPPESEN MASHHAD, IRAN
9 APR 10 **10-1R** **RADAR MINIMUM ALTITUDES**

| | | |
|-------------------------------------|--------------------------|--|
| MASHHAD Radar (APP) 127.3 | Apt Elev 3263' | Alt Set: hPa Trans level: By ATC Trans alt: 8000' Chart only to be used for cross-checking while under radar control. |
|-------------------------------------|--------------------------|--|



CHANGES: Sectors & altitudes.

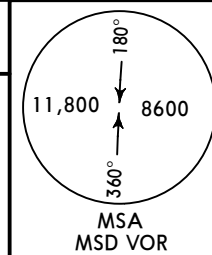
© JEPPESEN, 2009, 2010. ALL RIGHTS RESERVED.

OIMM/MHD
 SHAHID HASHEMI NEJAD INTL

JEPPESEN
 16 JUN 17 10-2 Eff 22 Jun

MASHHAD, IRAN
 STAR

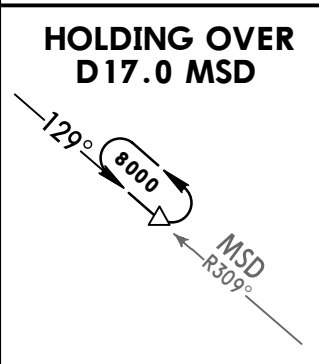
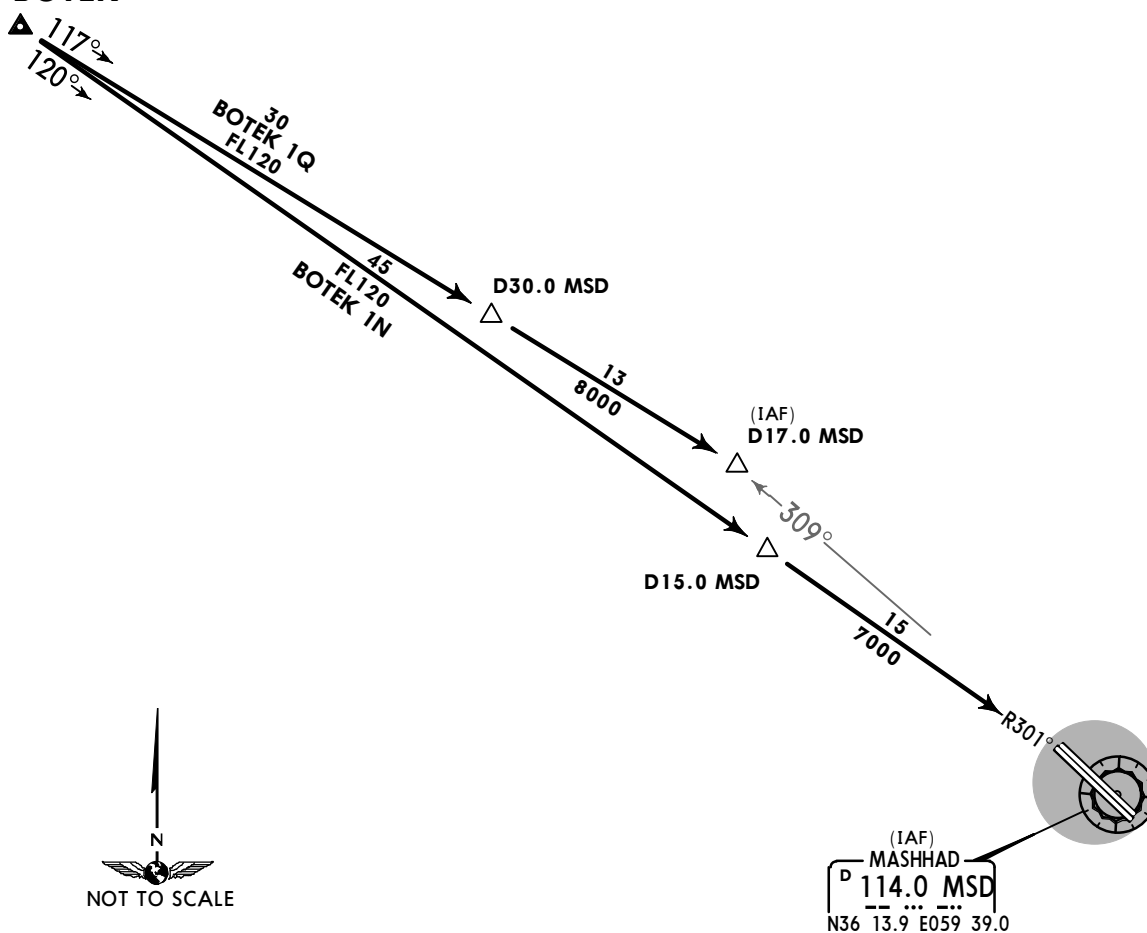
| | | |
|---------------|-------------------|---|
| ATIS 126.4 | Apt Elev 3266' | Alt Set: hPa Trans level: By ATC Trans alt: 8000' Actual descent clearance will be as directed by ATC. |
|---------------|-------------------|---|



**BOTEK 1N [BOTE1N], BOTEK 1Q [BOTE1Q]
 RWYS 13L/R, 31L/R ARRIVALS**

SPEED RESTRICTION
 From D60.0 MSD to D30.0 MSD:
 MAX 280 KT between FL245 & FL150.
 Within D30.0 MSD:
 MAX 220 KT at or below FL150.

BOTEK

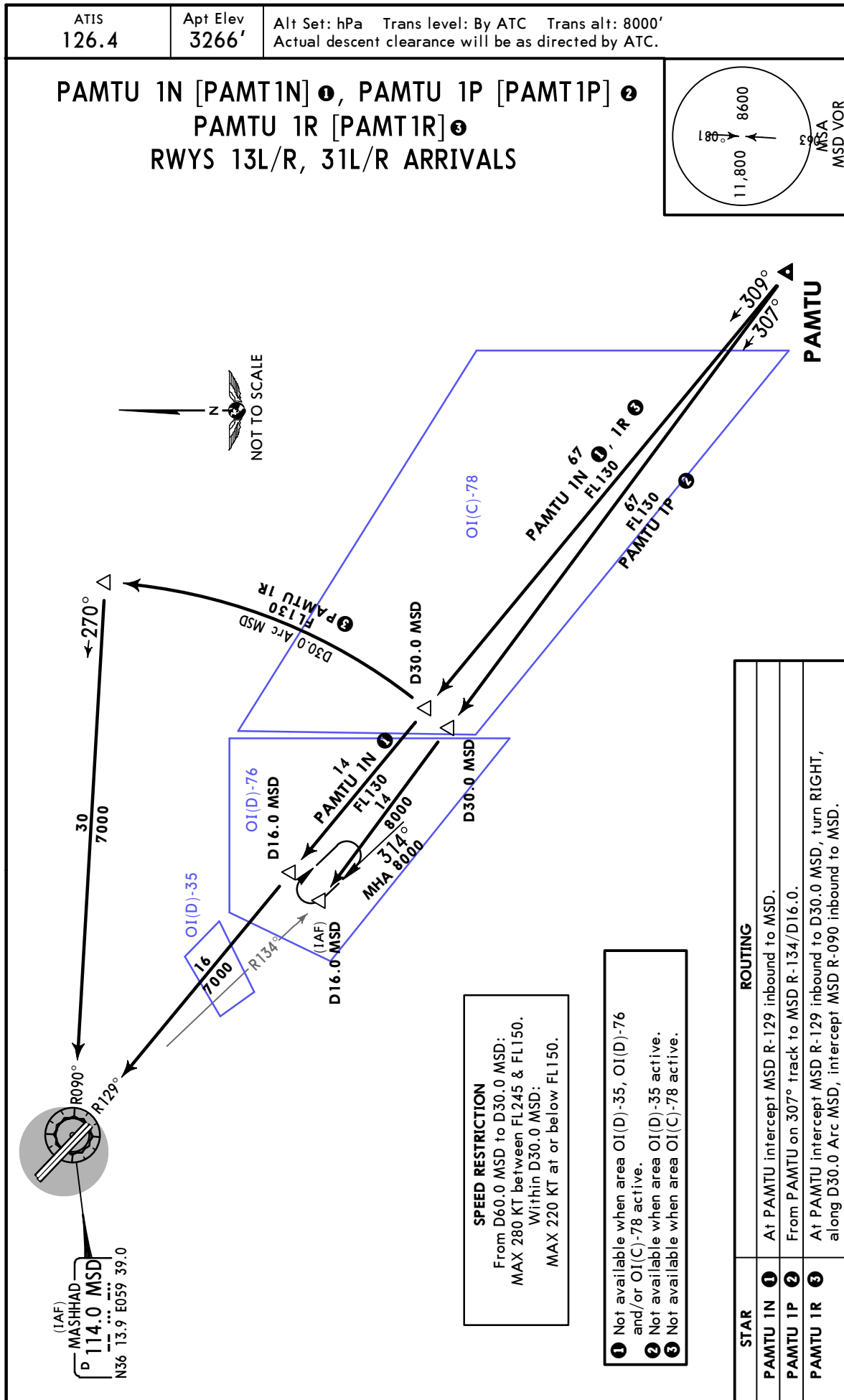


| STAR | ROUTING |
|----------|--|
| BOTEK 1N | At BOTEK intercept MSD R-301 inbound to MSD. |
| BOTEK 1Q | From BOTEK on 117° track to MSD R-309/D17.0. |

OIMM/MHD
 SHAHID HASHEMI NEJAD INTL

JEPPesen
 16 JUN 17 10-2A Eff 22 Jun

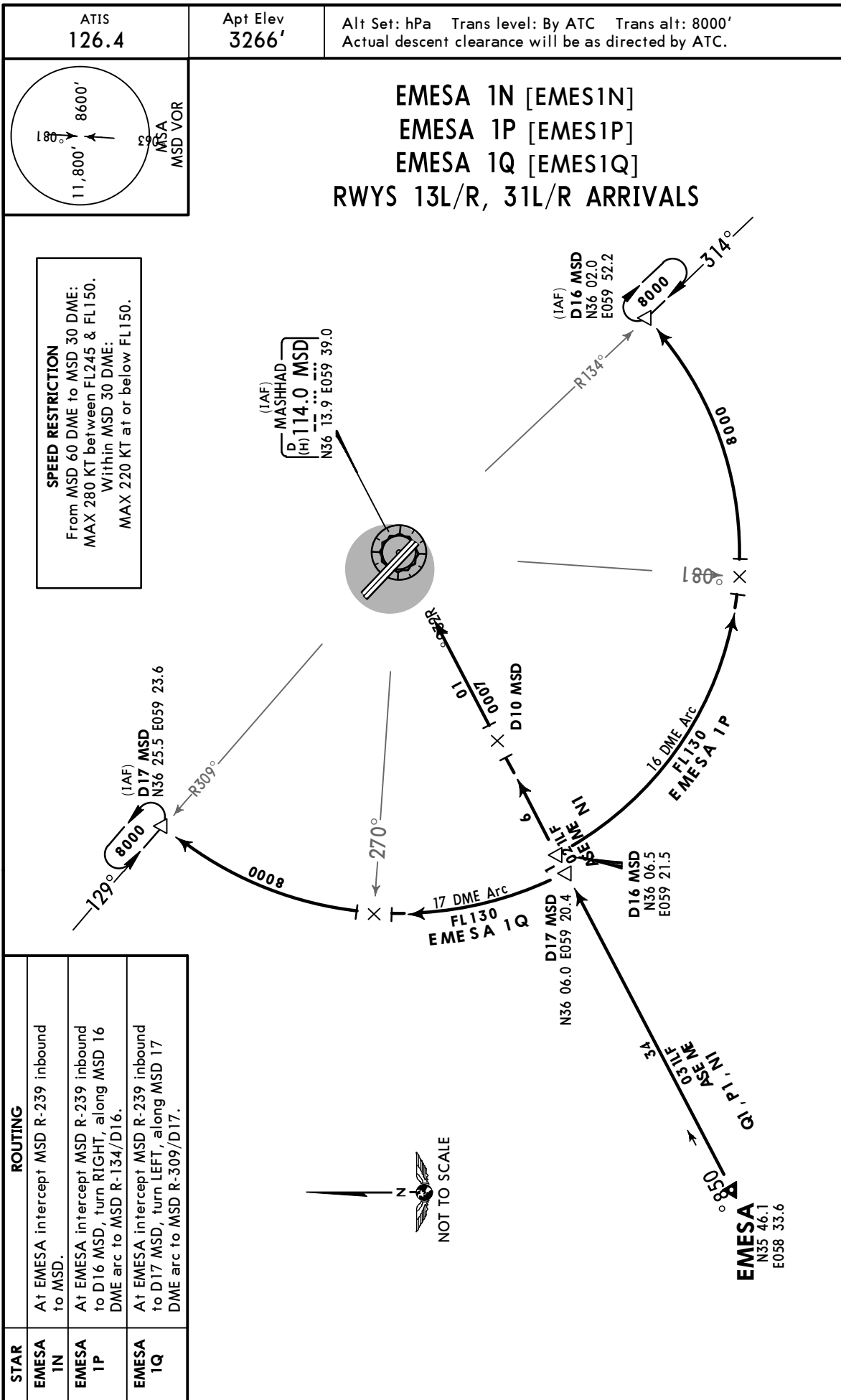
MASHHAD, IRAN
 STAR



OIMM/MHD
SHAHID HASHEMI NEJAD INTL

JEPPesen
 10 JUN 16 **(10-2A1)** Eff 23 Jun

MASHHAD, IRAN
STAR



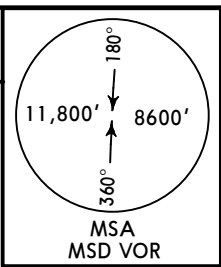
CHANGES: MEAs revised.

OIMM/MHD
 SHAHID HASHEMI NEJAD INTL

JEPPESEN
 10 JUN 16 (10-2A2) Eff 23 Jun

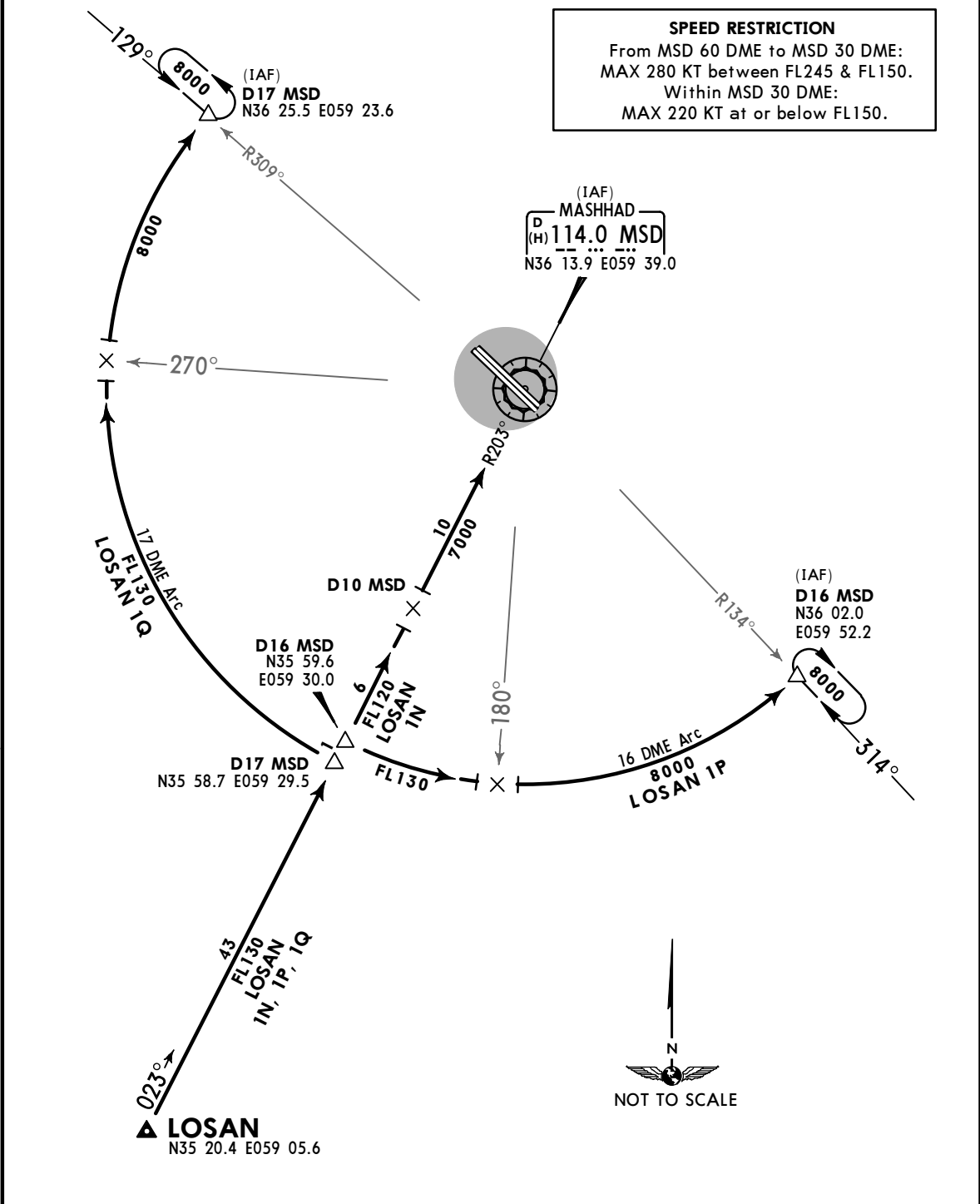
MASHHAD, IRAN
 STAR

| | | |
|---------------|-------------------|---|
| ATIS 126.4 | Apt Elev 3266' | Alt Set: hPa Trans level: By ATC Trans alt: 8000' Actual descent clearance will be as directed by ATC. |
|---------------|-------------------|---|



LOSAN 1N [LOSA1N]
 LOSAN 1P [LOSA1P]
 LOSAN 1Q [LOSA1Q]
 RWYS 13L/R, 31L/R ARRIVALS

SPEED RESTRICTION
 From MSD 60 DME to MSD 30 DME:
 MAX 280 KT between FL245 & FL150.
 Within MSD 30 DME:
 MAX 220 KT at or below FL150.



| STAR | ROUTING |
|----------|---|
| LOSAN 1N | At LOSAN intercept MSD R-203 inbound to MSD |
| LOSAN 1P | At LOSAN intercept MSD R-203 inbound to D16 MSD, turn RIGHT, along MSD 16 DME arc to MSD R-134/D16. |
| LOSAN 1Q | At LOSAN intercept MSD R-203 inbound to D17 MSD, turn LEFT, along MSD 17 DME arc to MSD R-309/D17. |

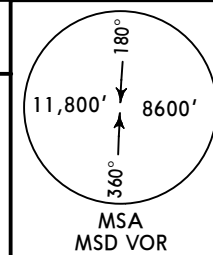
CHANGES: MEAs revised.

OIMM/MHD
 SHAHID HASHEMI NEJAD INTL

JEPPESEN
 7 OCT 16 10-2B Eff 13 Oct

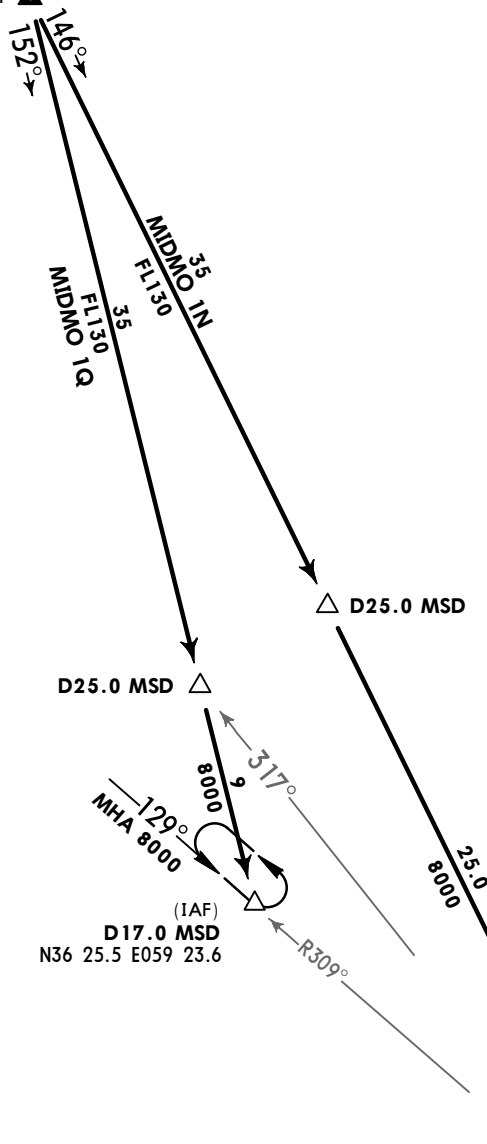
MASHHAD, IRAN
 STAR

ATIS 126.4 Apt Elev 3266' Alt Set: hPa Trans level: By ATC Trans alt: 8000'
 Actual descent clearance will be as directed by ATC.



MIDMO 1N [MIDM1N], MIDMO 1Q [MIDM1Q]
 RWYS 13L/R, 31L/R ARRIVALS

MIDMO
 N37 05.7 E059 01.4



SPEED RESTRICTION
 From MSD 60 DME to MSD 30 DME:
 MAX 280 KT between FL245 & FL150.
 Within MSD 30 DME:
 MAX 220 KT at or below FL150.

(IAF)
 MASHHAD
 114.0 MSD
 N36 13.9 E059 39.0

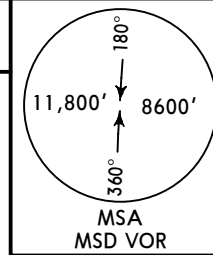
| STAR | ROUTING |
|----------|--|
| MIDMO 1N | At MIDMO intercept MSD R-326 inbound to MSD. |
| MIDMO 1Q | From MIDMO on 152° track to MSD R-309/D17.0. |

OIMM/MHD
 SHAHID HASHEMI NEJAD INTL

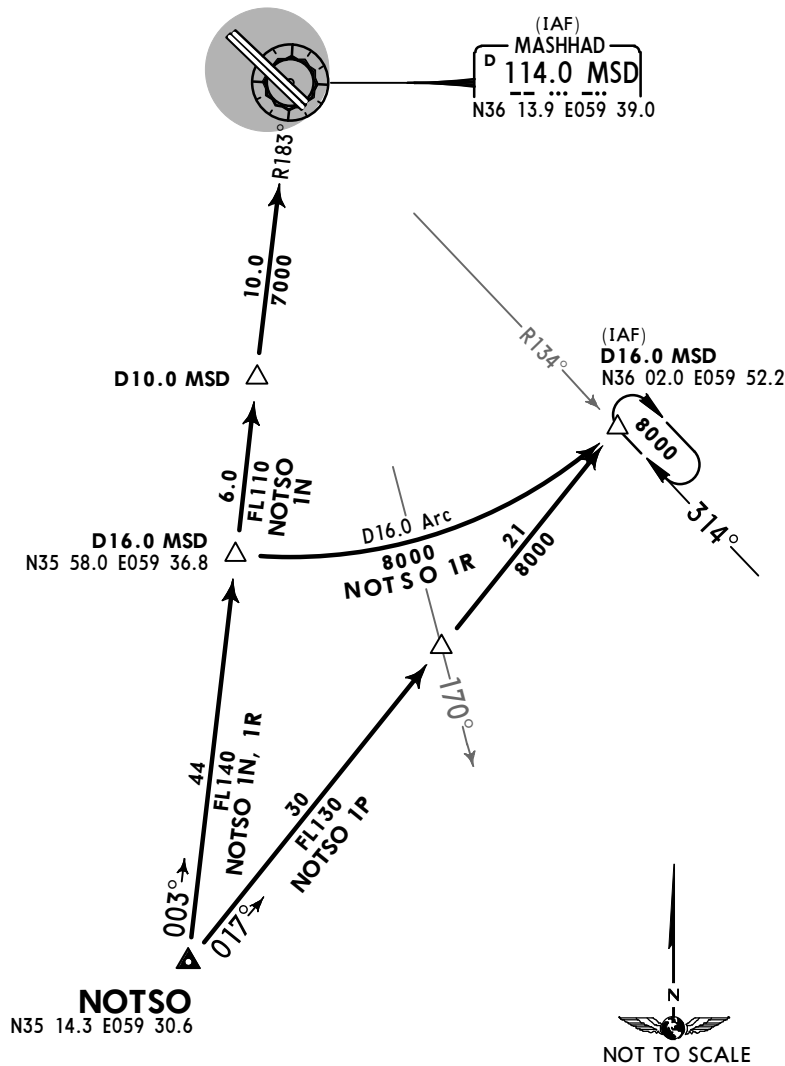
JEPPESEN
 7 OCT 16 10-2C Eff 13 Oct

MASHHAD, IRAN
 STAR

ATIS 126.4 Apt Elev 3266' Alt Set: hPa Trans level: By ATC Trans alt: 8000'
 Actual descent clearance will be as directed by ATC.



NOTSO 1N [NOTS1N], NOTSO 1P [NOTS1P]
 NOTSO 1R [NOTS1R]
 RWYS 13L/R, 31L/R ARRIVALS



SPEED RESTRICTION
 From MSD 60 DME to MSD 30 DME:
 MAX 280 KT between FL245 & FL150.
 Within MSD 30 DME:
 MAX 220 KT at or below FL150.

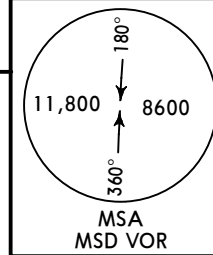
| STAR | ROUTING |
|----------|---|
| NOTSO 1N | At NOTSO intercept MSD R-183 inbound to MSD. |
| NOTSO 1P | From NOTSO on 017° track to MSD R-134/D16.0. |
| NOTSO 1R | At NOTSO intercept MSD R-183 inbound to D16.0 MSD, turn RIGHT, along D16. MSD arc to MSD R-134/D16.0. |

OIMM/MHD
 SHAHID HASHEMI NEJAD INTL 28 APR 17

JEPPESEN
 10-2D

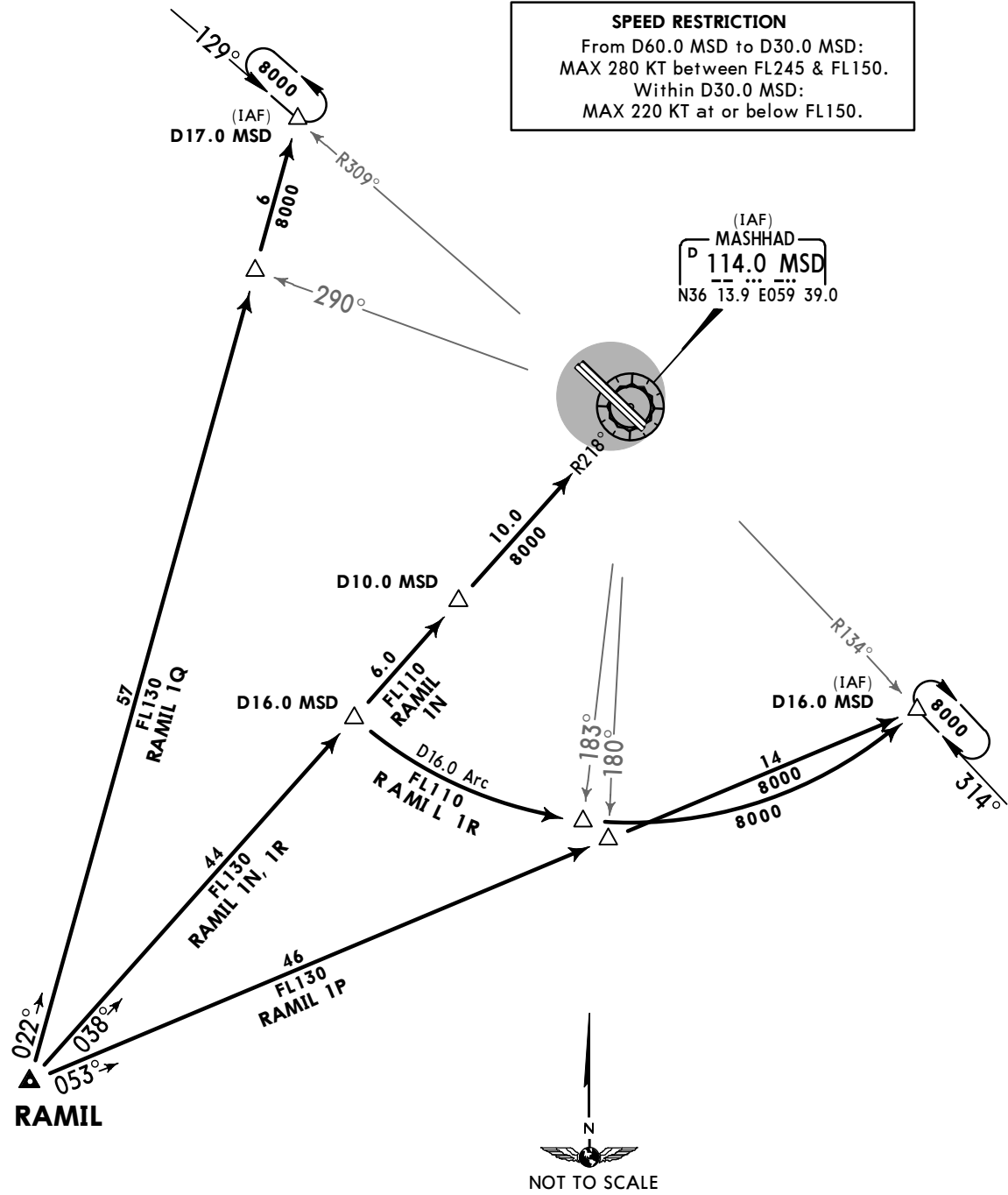
MASHHAD, IRAN
STAR

ATIS 126.4 Apt Elev 3266' Alt Set: hPa Trans level: By ATC Trans alt: 8000'
 Actual descent clearance will be as directed by ATC.



**RAMIL 1N [RAMI1N], RAMIL 1P [RAMI1P]
 RAMIL 1Q [RAMI1Q], RAMIL 1R [RAMI1R]
 RWYS 13L/R, 31L/R ARRIVALS**

SPEED RESTRICTION
 From D60.0 MSD to D30.0 MSD:
 MAX 280 KT between FL245 & FL150.
 Within D30.0 MSD:
 MAX 220 KT at or below FL150.



| STAR | ROUTING |
|-----------------|--|
| RAMIL 1N | At RAMIL intercept MSD R218 inbound to MSD |
| RAMIL 1P | From RAMIL on 053° track to MSD R134/D16.0. |
| RAMIL 1Q | From RAMIL on 022° track to MSD R309/D17.0. |
| RAMIL 1R | At RAMIL intercept MSD R218 inbound to D16.0 MSD, turn RIGHT, along D16.0 MSD arc to MSD R134/D16.0. |

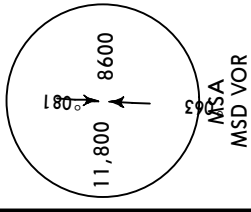
CHANGES: None.

OIMM/MHD
 SHAHID HASHEMI NEJAD INTL 28 APR 17

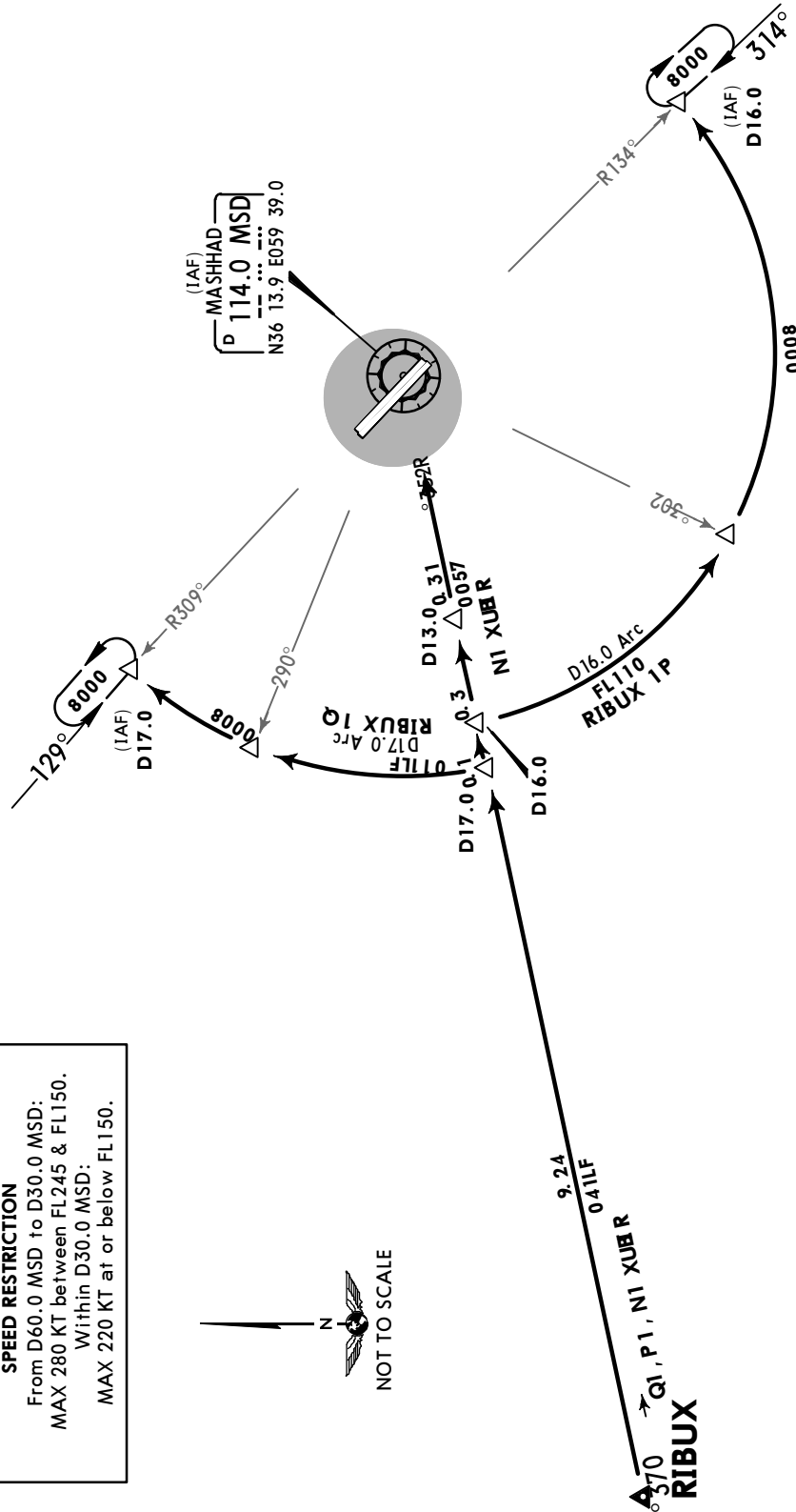
JEPPESEN
 10-2E

MASHHAD, IRAN
STAR

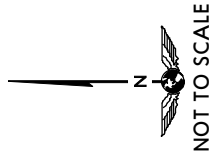
| | | |
|---------------|-------------------|---|
| ATIS 126.4 | Apt Elev 3266' | Alt Set: hPa Trans level: By ATC Trans alt: 8000' Actual descent clearance will be as directed by ATC. |
|---------------|-------------------|---|



**RIBUX 1N [RIBU1N], RIBUX 1P [RIBU1P]
 RIBUX 1Q [RIBU1Q]
 RWYS 13L/R, 31L/R ARRIVALS**



SPEED RESTRICTION
 From D60.0 MSD to D30.0 MSD:
 MAX 280 KT between FL245 & FL150.
 Within D30.0 MSD:
 MAX 220 KT at or below FL150.



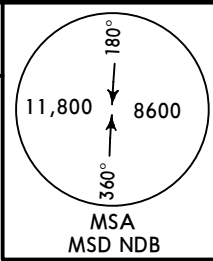
| STAR | ROUTING |
|----------|---|
| RIBUX 1N | From RIBUX on 073° track to MSD. |
| RIBUX 1P | From RIBUX on 073° track to D16.0 MSD, turn RIGHT, along D16.0 MSD arc to MSD R134/D16.0. |
| RIBUX 1Q | From RIBUX on 073° track to D17.0 MSD, turn LEFT, along D17.0 MSD arc to MSD R309/D17.0. |

OIMM/MHD
SHAHID HASHEMI NEJAD INTL

16 JUN 17
10-2F
Eff 22 Jun

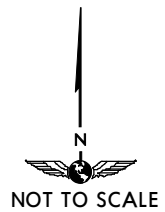
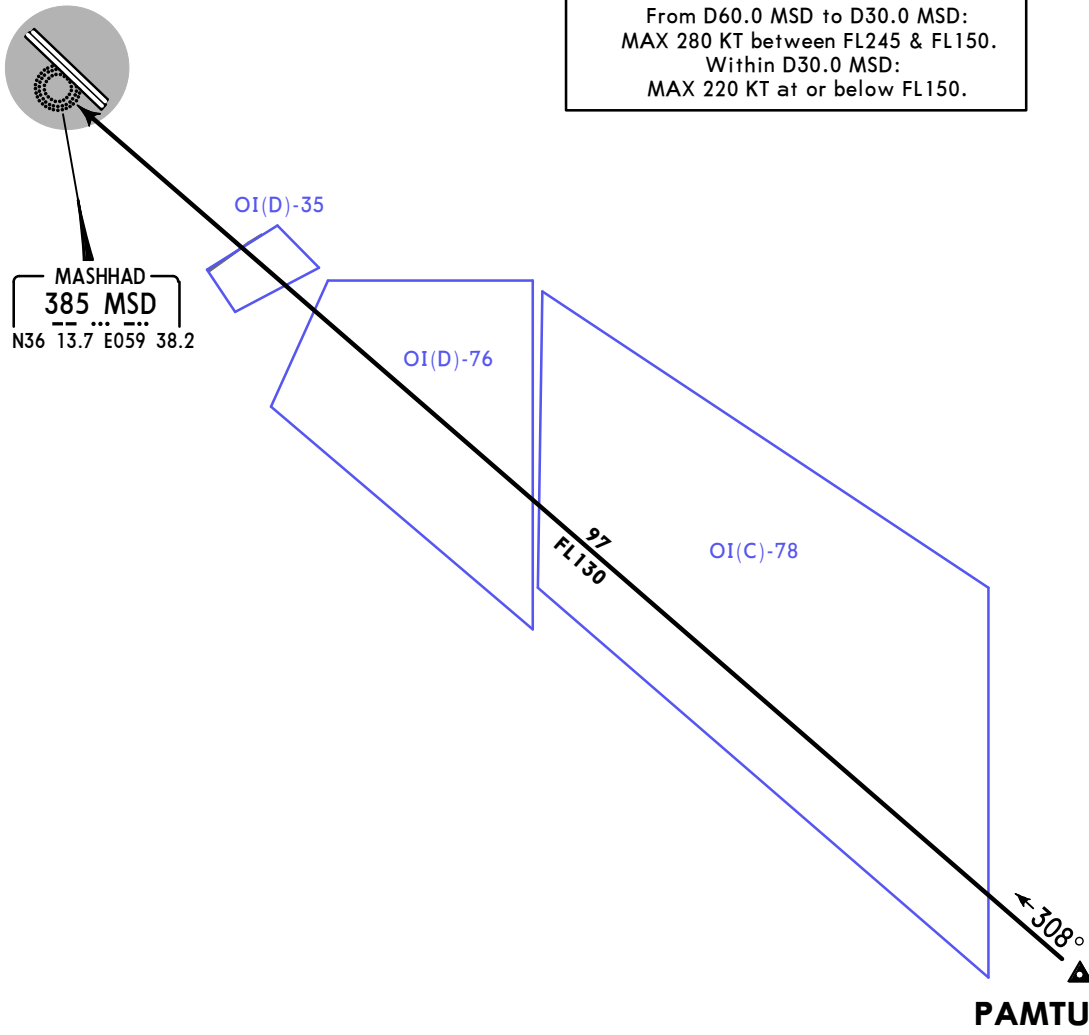
MASHHAD, IRAN
STAR

| | | |
|---------------|-------------------|---|
| ATIS 126.4 | Apt Elev 3266' | Alt Set: hPa Trans level: By ATC Trans alt: 8000' Actual descent clearance will be as directed by ATC. |
|---------------|-------------------|---|



PAMTU 1T [PAMT1T]
RWYS 13L/R, 31L/R ARRIVAL
NOT AVAILABLE WHEN OI(D)-35, OI(D)-76 & OI(C)-78 active

SPEED RESTRICTION
From D60.0 MSD to D30.0 MSD:
MAX 280 KT between FL245 & FL150.
Within D30.0 MSD:
MAX 220 KT at or below FL150.



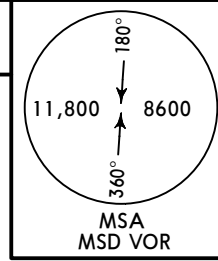
ROUTING
At PAMTU intercept 308° bearing to MSD.

OIMM/MHD
SHAHID HASHEMI NEJAD INTL

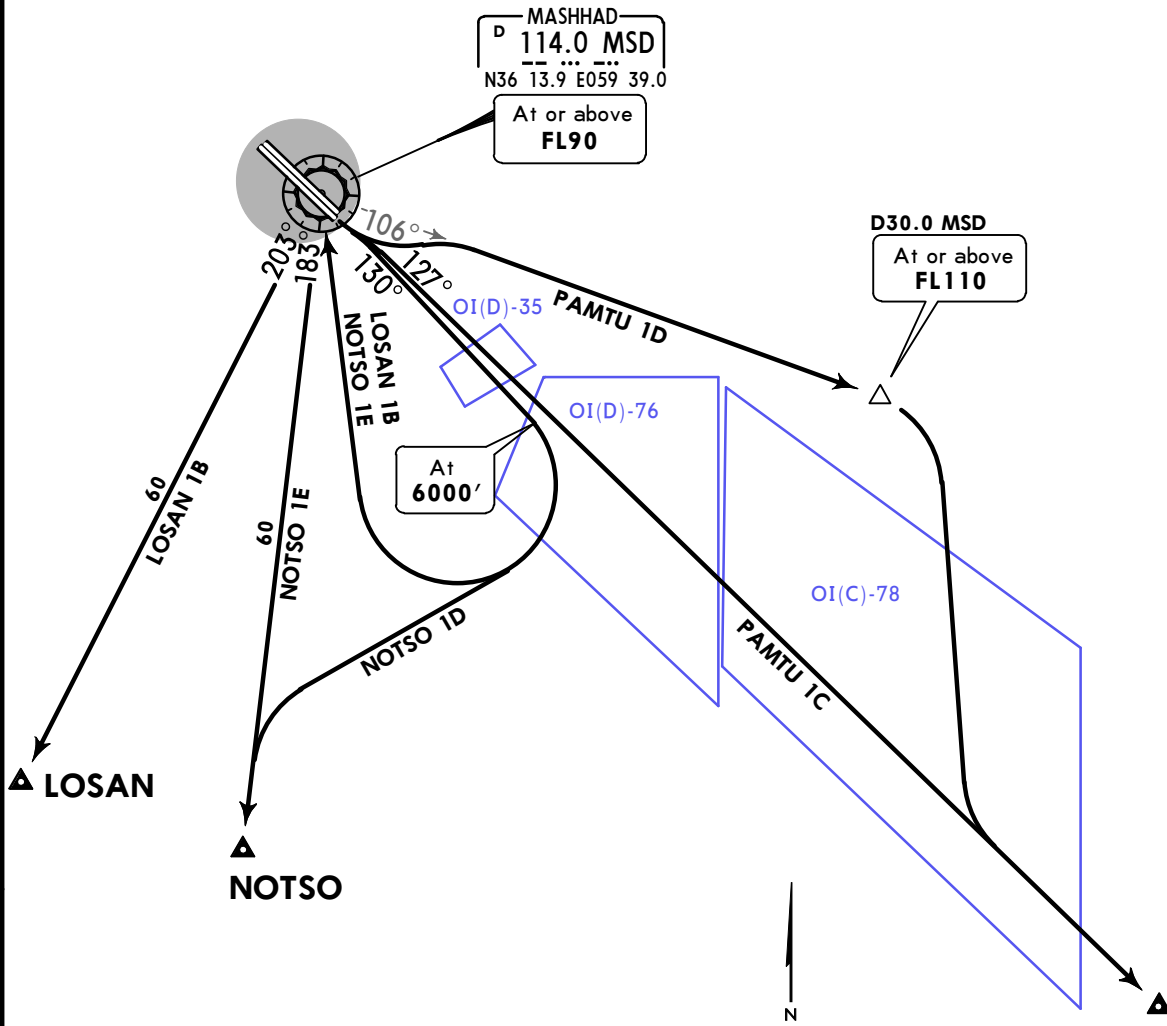
JEPPESEN
 16 JUN 17 **10-3** **Eff 22 Jun**

MASHHAD, IRAN
SID

Apt Elev **3266'** Trans level: By ATC Trans alt: 8000'



PAMTU 1C [PAMT1C], PAMTU 1D [PAMT1D]
LOSAN 1B [LOSA1B]
NOTSO 1D [NOTS1D], NOTSO 1E [NOTS1E]
RWYS 13L/R DEPARTURES
BASED ON MSD VORDME



These SIDs require minimum climb gradients of
 of
 PAMTU 1C, 1D: 270' per NM.
 NOTSO 1D: 300' per NM up to 8000'.

| Gnd speed-KT | 75 | 100 | 150 | 200 | 250 | 300 |
|--------------|-----|-----|-----|------|------|------|
| 300' per NM | 375 | 500 | 750 | 1000 | 1250 | 1500 |
| 270' per NM | 338 | 450 | 675 | 900 | 1125 | 1350 |

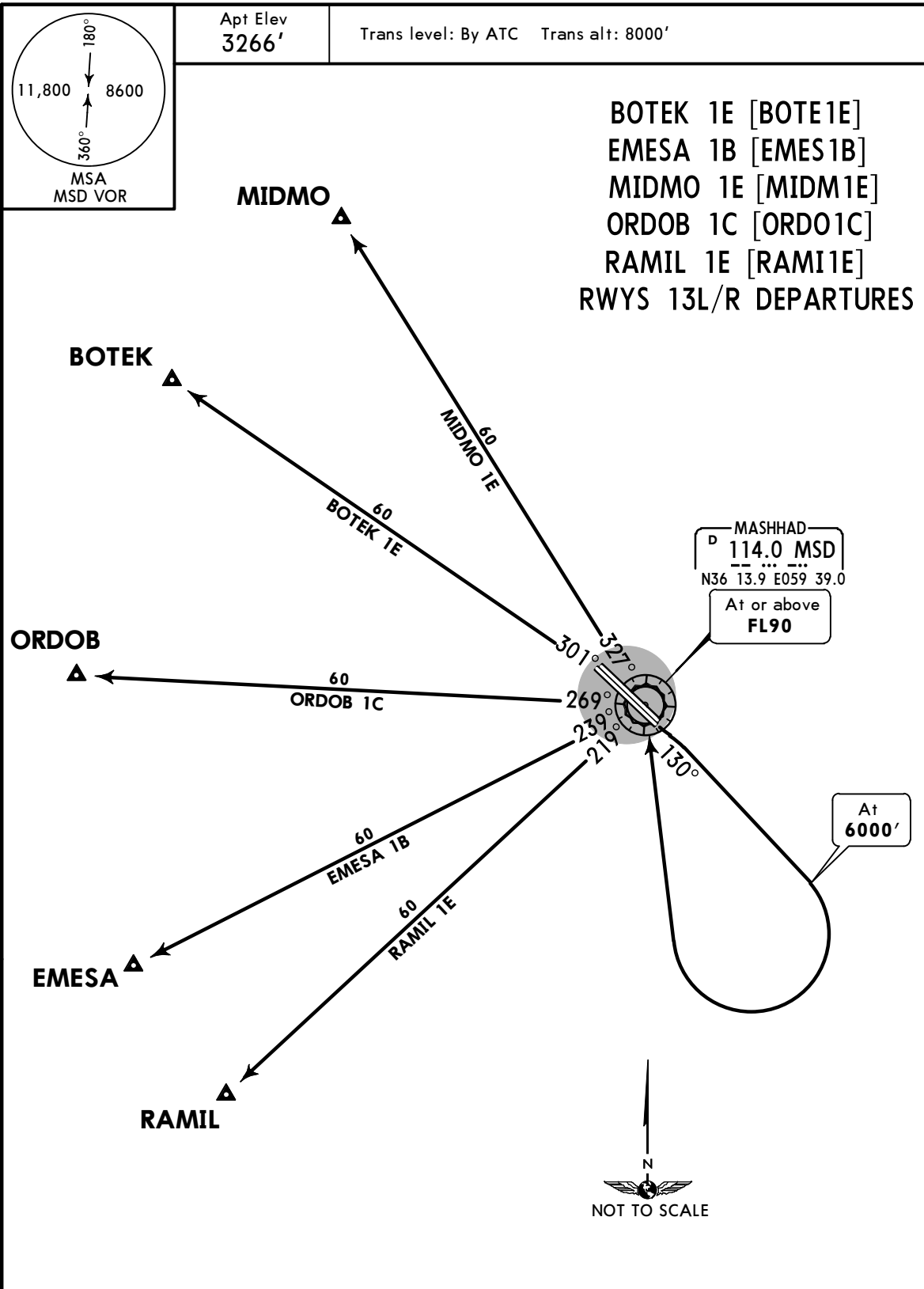
| SID | ROUTING |
|-------------------|--|
| PAMTU 1C ① | Climb on MSD R-127 to PAMTU, climb to cleared FL. |
| PAMTU 1D ② | Turn LEFT, climb on MSD R-106 to D30.0 MSD, turn RIGHT, intercept MSD R-127 to PAMTU, climb to cleared FL. |
| LOSAN 1B | Climb on MSD R-130 to 6000', turn RIGHT to MSD, MSD R-203 to LOSAN, climb to cleared FL. |
| NOTSO 1D | Climb on MSD R-130 to 6000', turn RIGHT, intercept MSD R-183 to NOTSO, climb to cleared FL. |
| NOTSO 1E | Climb on MSD R-130 to 6000', turn RIGHT to MSD, MSD R-183 to NOTSO, climb to cleared FL. |

① Not available when area OI(D)-35, OI(D)-76 and/or OI(C)-78 active.
 ② Not available when area OI(C)-78 active.

OIMM/MHD
 SHAHID HASHEMI NEJAD INTL

JEPPESEN
 16 JUN 17 10-3A Eff 22 Jun

MASHHAD, IRAN
 SID



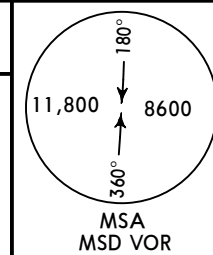
| SID | ROUTING |
|----------|--|
| BOTEK 1E | Climb on MSD R-130 to 6000', turn RIGHT to MSD, MSD R-301 to BOTEK, climb to cleared FL. |
| EMESA 1B | Climb on MSD R-130 to 6000', turn RIGHT to MSD, MSD R-239 to EMESA, climb to cleared FL. |
| MIDMO 1E | Climb on MSD R-130 to 6000', turn RIGHT to MSD, MSD R-327 to MIDMO, climb to cleared FL. |
| ORDOB 1C | Climb on MSD R-130 to 6000', turn RIGHT to MSD, MSD R-269 to ORDOB, climb to cleared FL. |
| RAMIL 1E | Climb on MSD R-130 to 6000', turn RIGHT to MSD, MSD R-219 to RAMIL, climb to cleared FL. |

OIMM/MHD
 SHAHID HASHEMI NEJAD INTL

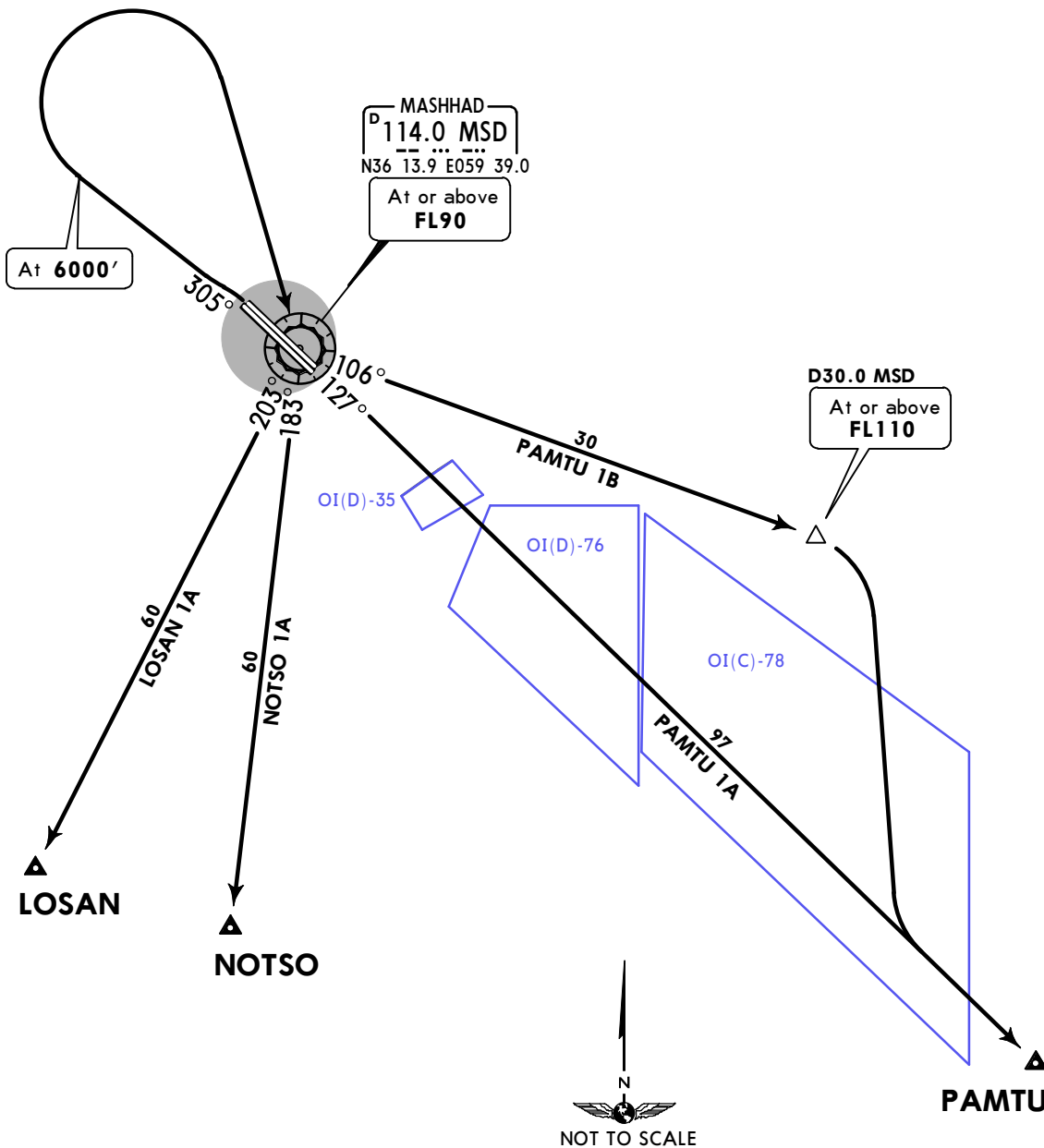
JEPPESEN
 16 JUN 17 10-3B Eff 22 Jun

MASHHAD, IRAN
 SID

Apt Elev 3266' Trans level: By ATC Trans alt: 8000'



PAMTU 1A [PAMT1A], PAMTU 1B [PAMT1B]
 LOSAN 1A [LOSA1A], NOTSO 1A [NOTS1A]
 RWYS 31L/R DEPARTURES
 BASED ON MSD VORDME



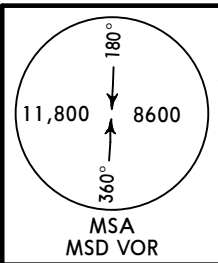
| SID | ROUTING |
|------------|--|
| PAMTU 1A ① | Climb on MSD R-305 to 6000', turn RIGHT to MSD, MSD R-127 to PAMTU, climb to cleared FL. |
| PAMTU 1B ② | Climb on MSD R-305 to 6000', turn RIGHT to MSD, MSD R-106 to D30.0 MSD, turn RIGHT, intercept MSD R-127 to PAMTU, climb to cleared FL. |
| LOSAN 1A | Climb on MSD R-305 to 6000', turn RIGHT to MSD, MSD R-203 to LOSAN, climb to cleared FL. |
| NOTSO 1A | Climb on MSD R-305 to 6000', turn RIGHT to MSD, MSD R-183 to NOTSO, climb to cleared FL. |

① Not available when area OI(D)-35, OI(D)-76 and/or OI(C)-78 active.
 ② Not available when area OI(C)-78 active.

OIMM/MHD
SHAHID HASHEMI NEJAD INTL

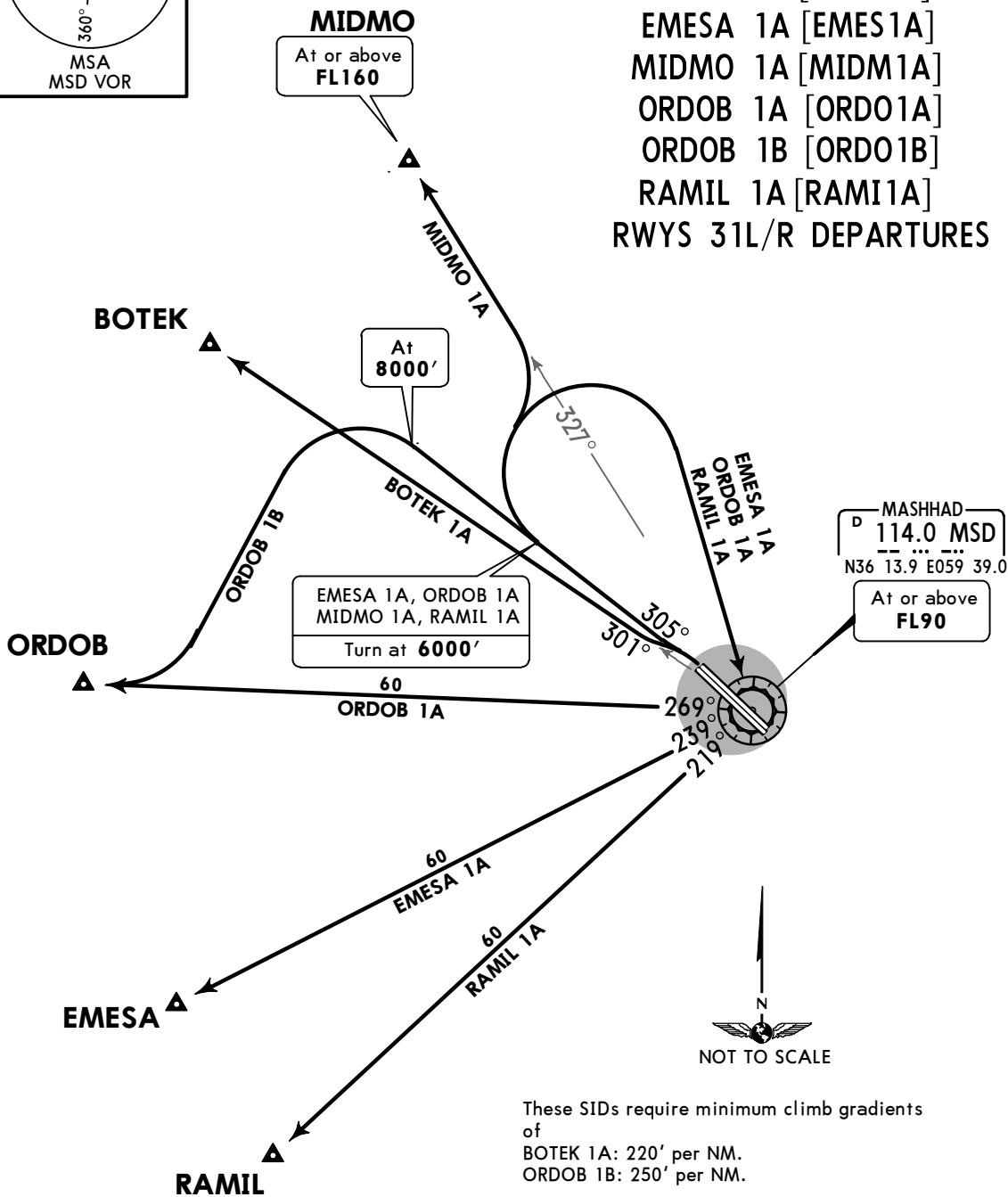
JEPPESEN
 16 JUN 17 **10-3C** Eff 22 Jun

MASHHAD, IRAN
SID



Apt Elev **3266'** Trans level: By ATC Trans alt: 8000'

- BOTEK 1A [BOTE1A]**
- EMESA 1A [EMES1A]**
- MIDMO 1A [MIDM1A]**
- ORDOB 1A [ORDO1A]**
- ORDOB 1B [ORDO1B]**
- RAMIL 1A [RAMI1A]**
- RWYS 31L/R DEPARTURES**



These SIDs require minimum climb gradients of
 BOTEK 1A: 220' per NM.
 ORDOB 1B: 250' per NM.

| Gnd speed-KT | 75 | 100 | 150 | 200 | 250 | 300 |
|--------------|-----|-----|-----|-----|------|------|
| 220' per NM | 275 | 367 | 550 | 733 | 917 | 1100 |
| 250' per NM | 313 | 417 | 625 | 833 | 1042 | 1250 |

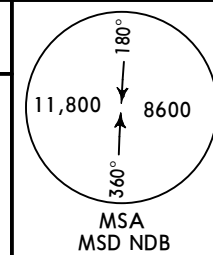
| SID | ROUTING |
|-----------------|--|
| BOTEK 1A | Climb on MSD R-301 to BOTEK, climb to cleared FL. |
| EMESA 1A | Climb on MSD R-305 to 6000', turn RIGHT to MSD, MSD R-239 to EMESA, climb to cleared FL. |
| MIDMO 1A | Climb on MSD R-305 to 6000', turn RIGHT, intercept MSD R-327 to MIDMO. |
| ORDOB 1A | Climb on MSD R-305 to 6000', turn RIGHT to MSD, MSD R-269 to ORDOB, climb to cleared FL. |
| ORDOB 1B | Climb on MSD R-305 to 8000', turn LEFT, intercept MSD R-269 to ORDOB, climb to cleared FL. |
| RAMIL 1A | Climb on MSD R-305 to 6000', turn RIGHT to MSD, MSD R-219 to RAMIL, climb to cleared FL. |

OIMM/MHD
 SHAHID HASHEMI NEJAD INTL

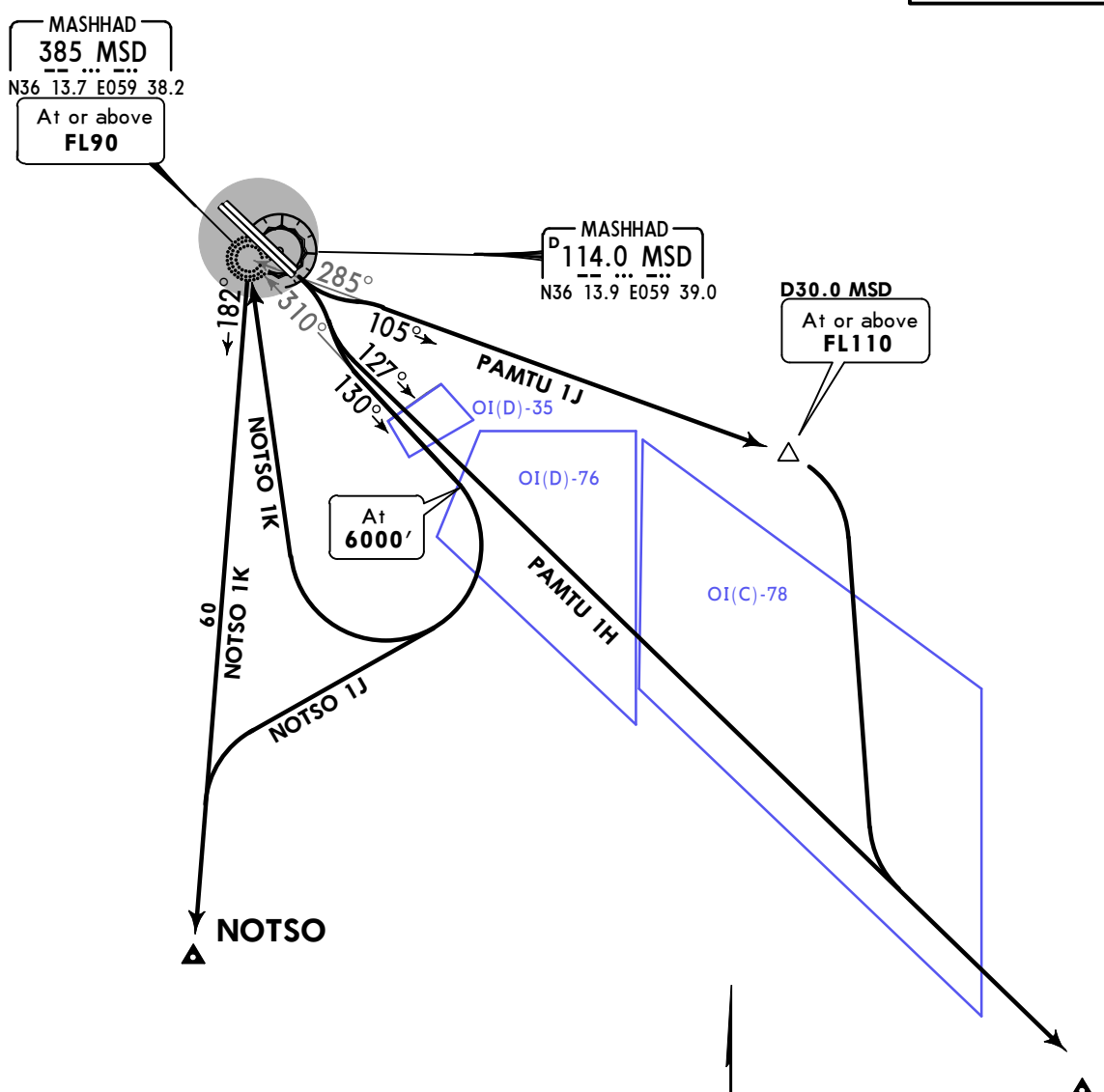
JEPPESEN
 16 JUN 17 10-3D Eff 22 Jun

MASHHAD, IRAN
 SID

| | |
|-------------------|--------------------------------------|
| Apt Elev 3266' | Trans level: By ATC Trans alt: 8000' |
|-------------------|--------------------------------------|



PAMTU 1H [PAMT1H], PAMTU 1J [PAMT1J]
 NOTSO 1J [NOTS1J], NOTSO 1K [NOTS1K]
 RWYS 13L/R DEPARTURES



These SIDs require minimum climb gradients of
 PAMTU 1H, 1J: 270' per NM.
 NOTSO 1J: 300' per NM up to 8000'.

| Gnd speed-KT | 75 | 100 | 150 | 200 | 250 | 300 |
|--------------|-----|-----|-----|------|------|------|
| 300' per NM | 375 | 500 | 750 | 1000 | 1250 | 1500 |
| 270' per NM | 338 | 450 | 675 | 900 | 1125 | 1350 |

| SID | ROUTING |
|-------------------|---|
| PAMTU 1H ① | Turn RIGHT, climb on 127° bearing from MSD NDB to PAMTU, climb to cleared FL. |
| PAMTU 1J ② | Climb on 105° bearing from MSD NDB to D30.0 MSD, turn RIGHT, intercept 127° bearing from MSD NDB to PAMTU, climb to cleared FL. |
| NOTSO 1J | Climb on 130° bearing from MSD NDB to 6000', turn RIGHT, intercept 182° bearing from MSD NDB to NOTSO, climb to cleared FL. |
| NOTSO 1K | Climb on 130° bearing from MSD NDB to 6000', turn RIGHT to MSD NDB, 182° bearing to NOTSO, climb to cleared FL. |

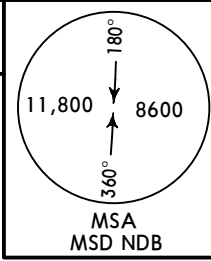
① Not available when area OI(D)-35, OI(D)-76 and/or OI(C)-78 active.
 ② Not available when area OI(C)-78 active.

OIMM/MHD
 SHAHID HASHEMI NEJAD INTL

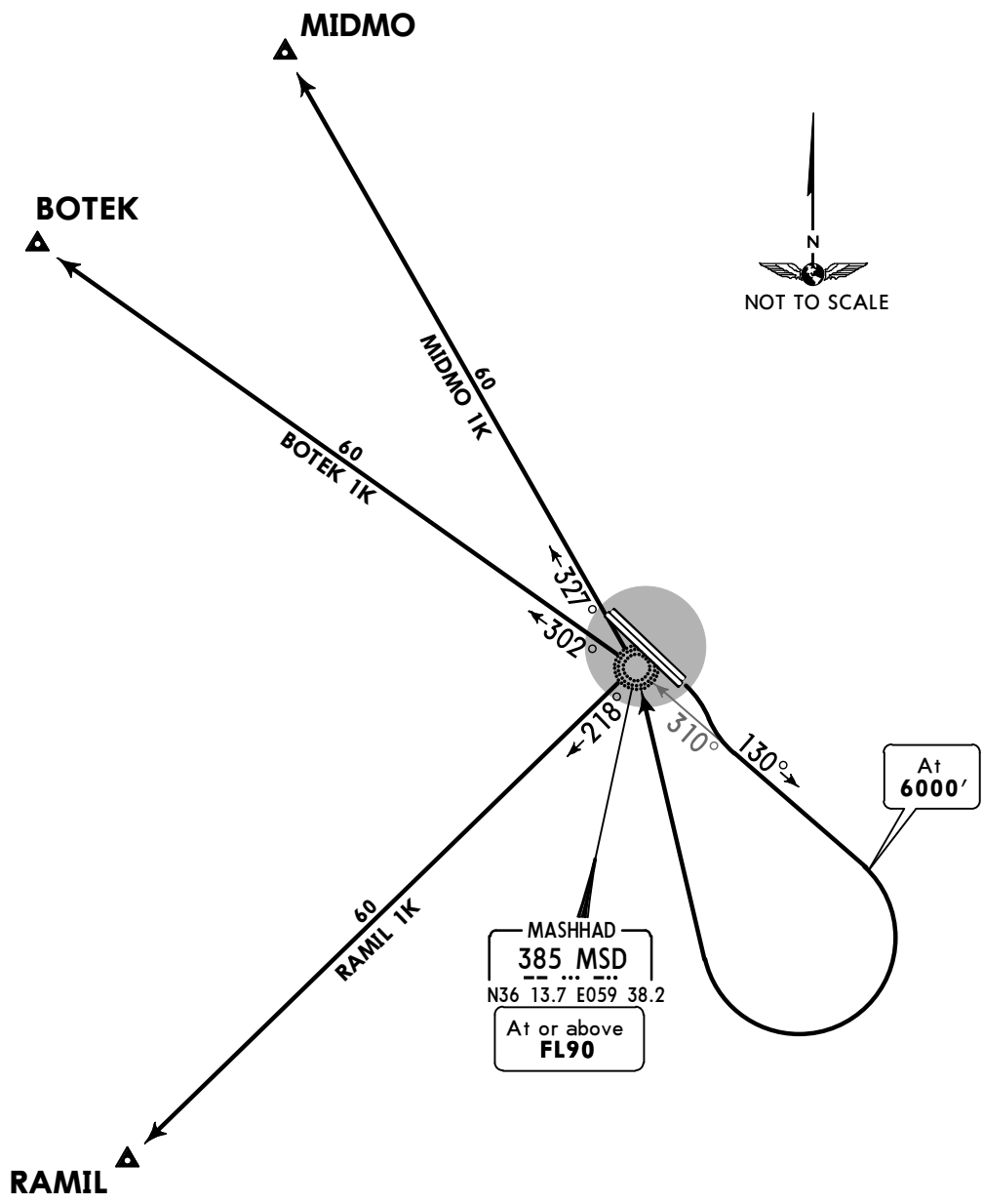
JEPPESEN
 16 JUN 17 (10-3E) Eff 22 Jun

MASHHAD, IRAN
SID

| | |
|--------------------------|--------------------------------------|
| Apt Elev 3266' | Trans level: By ATC Trans alt: 8000' |
|--------------------------|--------------------------------------|



**BOTEK 1K [BOTE1K], MIDMO 1K [MIDM1K]
 RAMIL 1K [RAMI1K]
 RWYS 13L/R DEPARTURES**

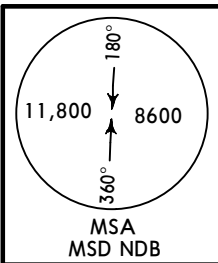


| SID | ROUTING |
|-----------------|--|
| BOTEK 1K | Climb on 130° bearing from MSD to 6000' turn RIGHT to MSD, 302° bearing to BOTEK, climb to cleared FL. |
| MIDMO 1K | Climb on 130° bearing from MSD to 6000' turn RIGHT to MSD, 327° bearing to MIDMO, climb to cleared FL. |
| RAMIL 1K | Climb on 130° bearing from MSD to 6000' turn RIGHT to MSD, 218° bearing to RAMIL, climb to cleared FL. |

OIMM/MHD
 SHAHID HASHEMI NEJAD INTL

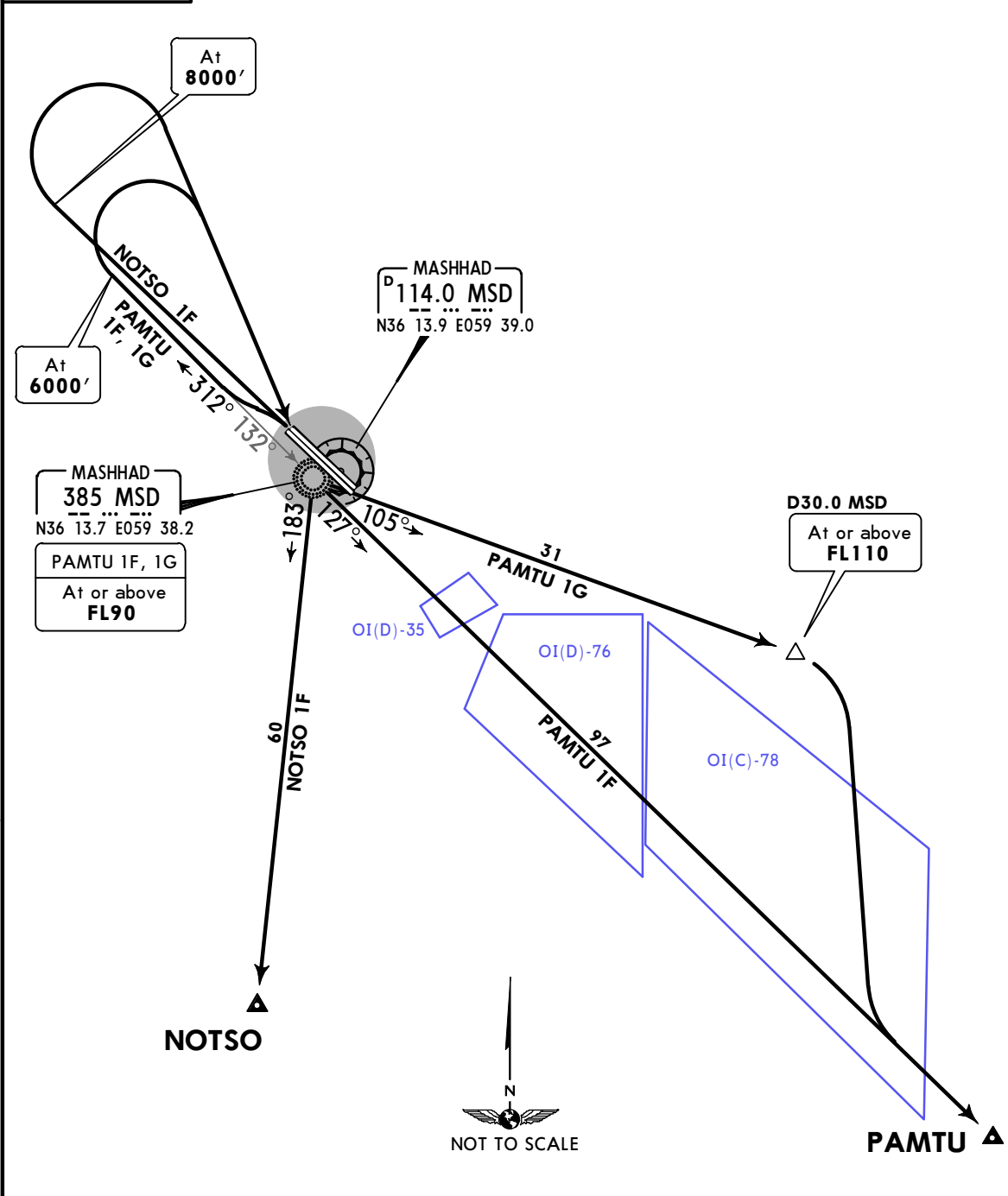
JEPPESEN
 16 JUN 17 10-3F Eff 22 Jun

MASHHAD, IRAN
 SID



Apt Elev 3266'
 Trans level: By ATC Trans alt: 8000'

PAMTU 1F [PAMT1F], PAMTU 1G [PAMT1G]
 NOTSO 1F [NOTS1F]
 RWYS 31L/R DEPARTURES



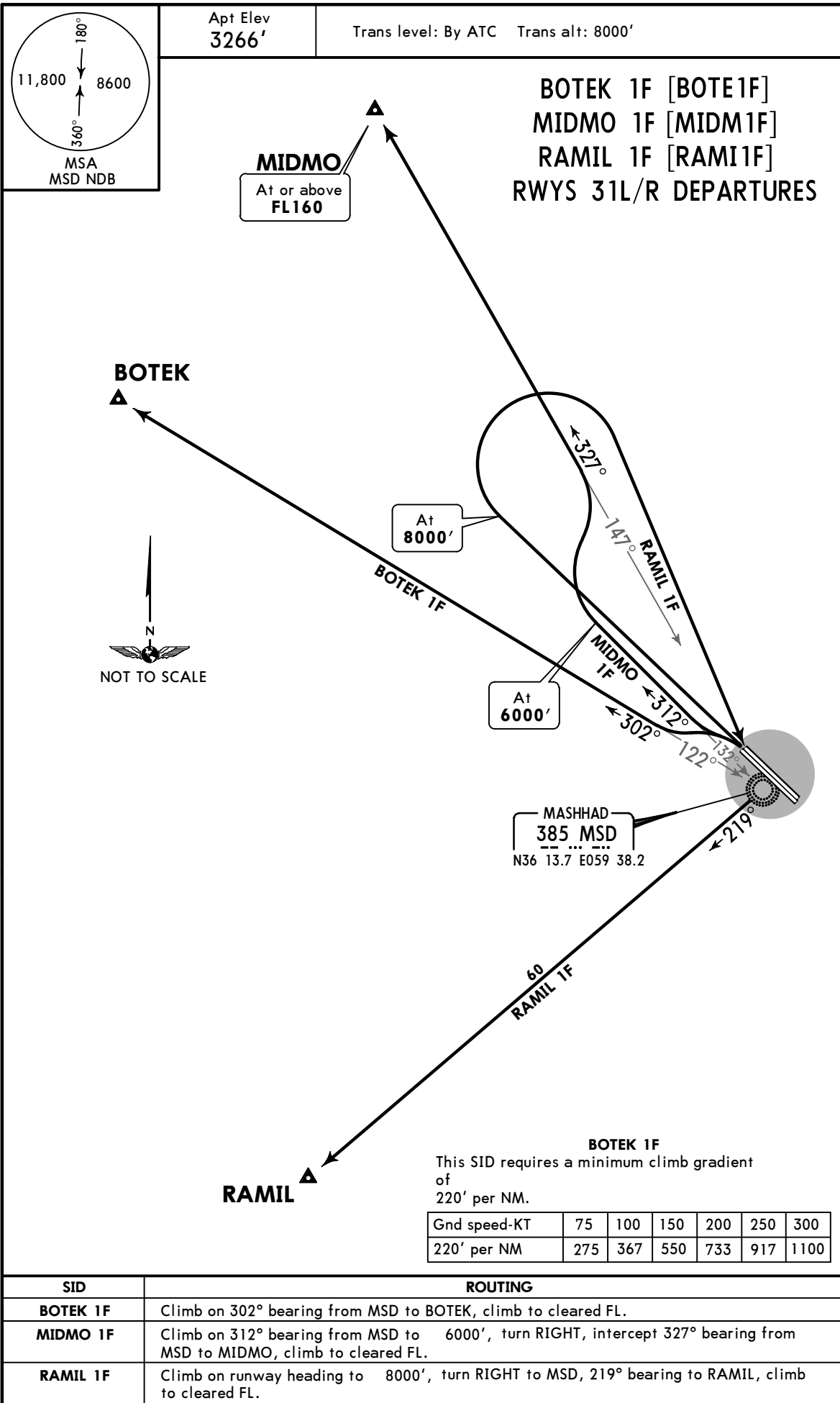
| SID | ROUTING |
|-------------------|--|
| PAMTU 1F ① | Climb on 312° bearing from MSD NDB to 6000', turn RIGHT to MSD NDB, 127° bearing to PAMTU, climb to cleared FL. |
| PAMTU 1G ② | Climb on 312° bearing from MSD NDB to 6000', turn RIGHT to MSD NDB, turn LEFT, 105° bearing to D30.0 MSD, turn RIGHT, intercept 127° bearing from MSD to PAMTU, climb to cleared FL. |
| NOTSO 1F | Climb on runway heading to 8000', turn RIGHT to MSD NDB, 183° bearing to NOTSO, climb to cleared FL. |

① Not available when area OI(D)-35, OI(D)-76 and/or OI(C)-78 active.
 ② Not available when area OI(C)-78 active.

OIMM/MHD
 SHAHID HASHEMI NEJAD INTL

JEPPESEN
 16 JUN 17 10-3G Eff 22 Jun

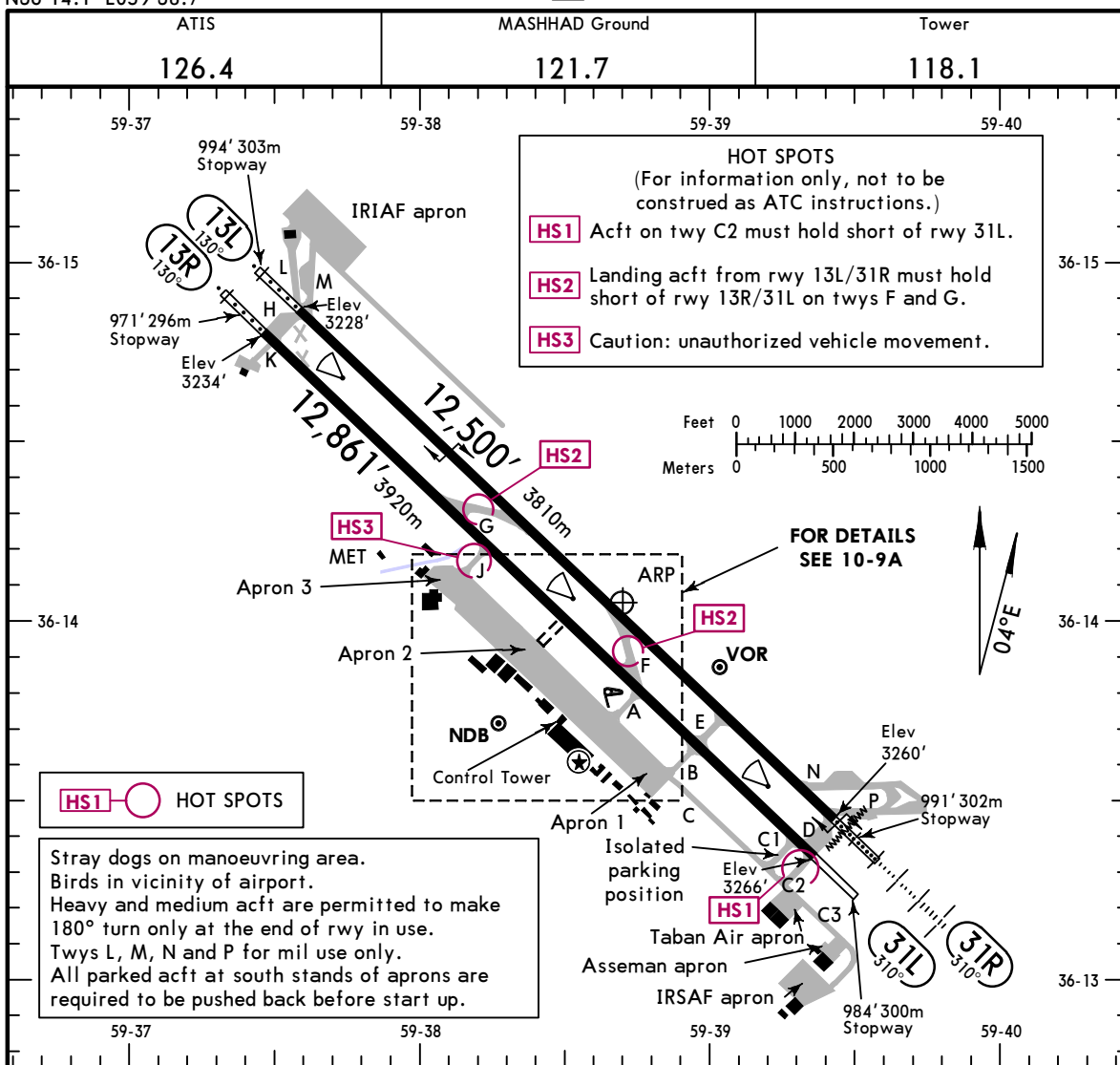
MASHHAD, IRAN
 SID



OIMM/MHD
 Apt Elev **3266'**
 N36 14.1 E059 38.7

JEPPesen
 29 MAR 19 **(10-9)**

MASHHAD, IRAN
 SHAHID HASHEMI NEJAD INTL



ADDITIONAL RUNWAY INFORMATION

| RWY | USABLE LENGTHS | | | | WIDTH |
|-----|--------------------------------------|-------------|----------|-------|-------|
| | LANDING BEYOND | | TAKE-OFF | | |
| | Threshold | Glide Slope | | | |
| 13L | HIRL (60m) ALS PAPI-L (angle 3.0°) | RVR | | | 148' |
| 31R | HIRL (60m) HIALS PAPI-L (angle 3.0°) | RVR | 11,346' | 3458m | 45m |
| 13R | HIRL (60m) ALS PAPI-L (angle 3.0°) | RVR | | | 148' |
| 31L | HIRL (60m) PAPI-L (angle 3.0°) | RVR | | | 45m |



TAKE-OFF

AIR CARRIER (JAA)

All Rwys

| | | |
|---|-----------|-------------------|
| | RL & RCLM | NIL (DAY only) |
| A | | |
| B | | |
| C | 400m | 500m |
| D | | |

CHANGES: Isolated parking position added.

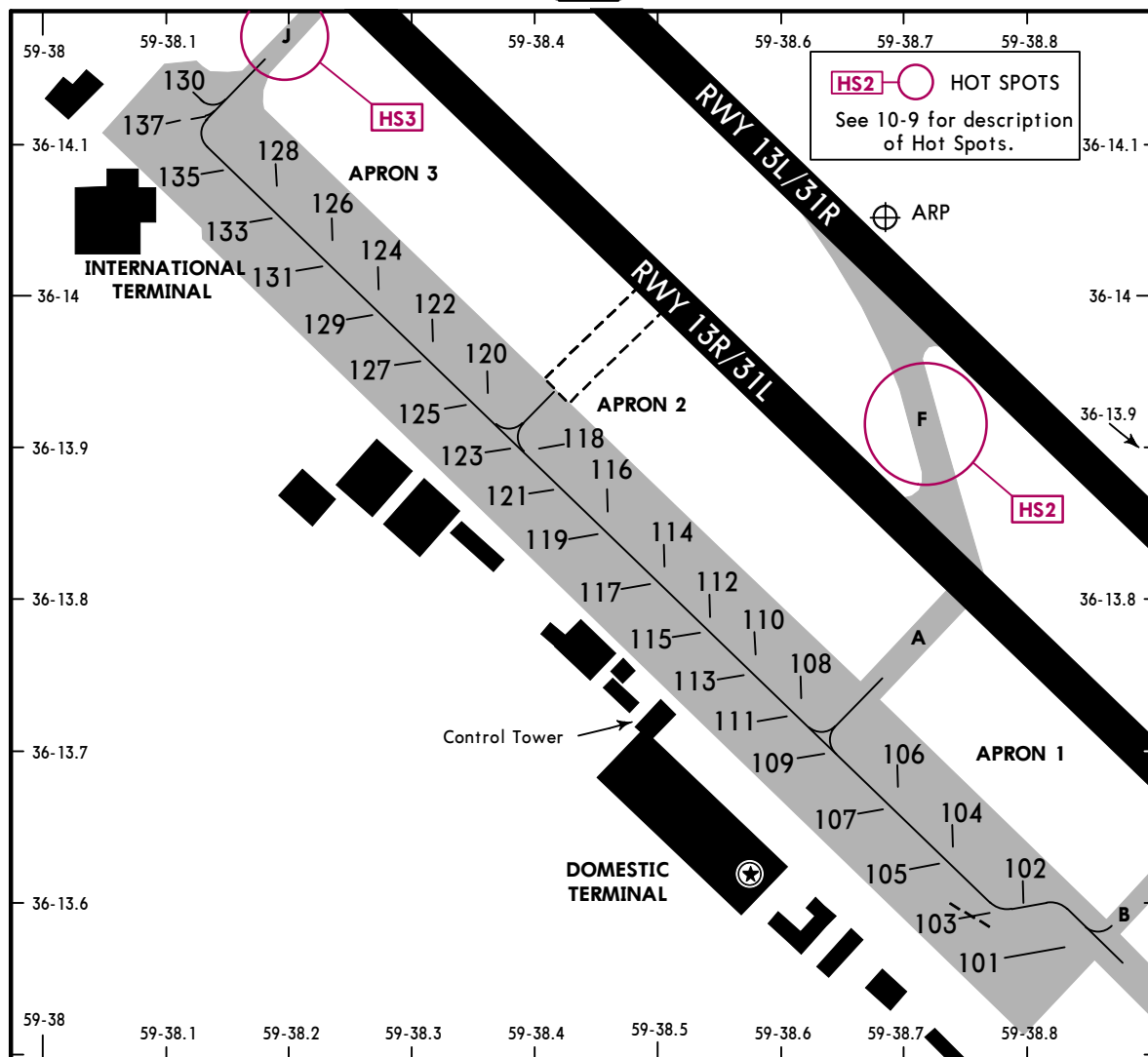
OIMM/MHD

JEPPESEN

MASHHAD, IRAN

29 MAR 19 (10-9A)

SHAHID HASHEMI NEJAD INTL



INS COORDINATES

| STAND No. | COORDINATES | STAND No. | COORDINATES |
|-----------|--------------------|-----------|--------------------|
| 101, 102 | N36 13.6 E059 38.8 | 119 | N36 13.8 E059 38.4 |
| 103 | N36 13.6 E059 38.7 | 120, 121 | N36 13.9 E059 38.4 |
| 104 | N36 13.7 E059 38.7 | 122 | N36 14.0 E059 38.3 |
| 105 | N36 13.6 E059 38.7 | 123 | N36 13.9 E059 38.3 |
| 106 | N36 13.7 E059 38.7 | 124 | N36 14.0 E059 38.3 |
| 107 | N36 13.6 E059 38.6 | 125 | N36 13.9 E059 38.3 |
| 108, 109 | N36 13.7 E059 38.6 | 126 | N36 14.0 E059 38.2 |
| 110 | N36 13.8 E059 38.6 | 127 | N36 13.9 E059 38.3 |
| 111 | N36 13.7 E059 38.6 | 128 | N36 14.1 E059 38.2 |
| 112 | N36 13.8 E059 38.5 | 129 | N36 14.0 E059 38.2 |
| 113 | N36 13.7 E059 38.5 | 130 | N36 14.1 E059 38.1 |
| 114, 115 | N36 13.8 E059 38.5 | 131, 133 | N36 14.0 E059 38.2 |
| 116 | N36 13.9 E059 38.5 | 135, 137 | N36 14.1 E059 38.1 |
| 117 | N36 13.8 E059 38.5 | | |
| 118 | N36 13.9 E059 38.4 | | |

OIMM/MHD



Standard

MASHHAD, IRAN
SHAHID HASHEMI NEJAD INTL

| STRAIGHT-IN RWY | A | B | C | D |
|----------------------------|---|---|---|---|
| 13L ① VOR DME 5 & 6 | 3800' (572') R2400m | 3800' (572') R2400m | 3800' (572') R2400m | 3800' (572') R2400m |
| ALS out | R2600m | R2600m | R2600m | R2600m |
| VOR DME 5 & 6 | 3800' (572') R2600m | 3800' (572') R2600m | 3800' (572') R2800m | 3800' (572') R2800m |
| ALS out | R2800m | R2800m | R3000m | R3000m |
| 13R ① VOR DME 4 & 6 | 3800' (566') R2400m | 3800' (566') R2400m | 3800' (566') R2400m | 3800' (566') R2400m |
| ALS out | R2600m | R2600m | R2600m | R2600m |
| VOR DME 4 & 6 | 3800' (566') R2600m | 3800' (566') R2600m | 3800' (566') R2800m | 3800' (566') R2800m |
| ALS out | R2800m | R2800m | R3000m | R3000m |
| 31L ① VOR DME 2 | 3630' (364') R1700m | 3630' (364') R1700m | 3630' (364') R1700m | 3630' (364') R1700m |
| ① VOR DME 3 | 3630' (364') R1500m | 3630' (364') R1500m | 3630' (364') R1700m | 3630' (364') R1700m |
| VOR DME 2 & 3 | 3630' (364') R1900m | 3630' (364') R1900m | 3630' (364') R2100m | 3630' (364') R2100m |
| ① NDB | 4020' (754') R1500m | 4020' (754') R1500m | 4020' (754') R3500m | 4020' (754') R3500m |
| NDB | 4020' (754') R3700m | 4020' (754') R3700m | 4020' (754') R3900m | 4020' (754') R3900m |
| 31R ILS | 3512' (252') ② R600m/V800m | 3512' (252') ② R600m/V800m | 3512' (252') ② R600m/V800m | 3512' (252') ② R600m/V800m |
| ALS out | R1300m | R1300m | R1300m | R1300m |
| ①③ LOC | 3630' (370') R1000m | 3630' (370') R1000m | 3630' (370') R1000m | 3630' (370') R1000m |
| ALS out | R1500m | R1500m | R1700m | R1700m |
| ①④ LOC | 4020' (760') R1500m | 4020' (760') R1500m | 4020' (760') R2400m | 4020' (760') R2400m |
| ① VOR DME 1 | 3630' (364') R1000m | 3630' (364') R1000m | 3630' (364') R1200m | 3630' (364') R1200m |
| ALS out | R1700m | R1700m | R1700m | R1700m |
| VOR DME 1 | 3630' (364') R1200m | 3630' (364') R1200m | 3630' (364') R1400m | 3630' (364') R1400m |
| ALS out | R1900m | R1900m | R2100m | R2100m |
| ① VOR DME 3 | 3630' (364') R1000m | 3630' (364') R1000m | 3630' (364') R1000m | 3630' (364') R1000m |
| ALS out | R1500m | R1500m | R1700m | R1700m |
| VOR DME 3 | 3630' (364') R1200m | 3630' (364') R1200m | 3630' (364') R1400m | 3630' (364') R1400m |
| ALS out | R1900m | R1900m | R2100m | R2100m |

- ① Continuous Descent Final Approach.
- ② W/o HUD/AP/FD: RVR 750m/V800m.
- ③ ILS 1 & 2.
- ④ ILS 3.

OIMM/MHD

JEPPESEN

Standard

8 SEP 17
Eff 14 Sep (10-9S1)

MASHHAD, IRAN
 SHAHID HASHEMI NEJAD INTL

| STRAIGHT-IN RWY | | A | B | C | D |
|-----------------|---------|--------------|--------------|--------------|--------------|
| 31R | ① NDB | 4020' (754') | 4020' (754') | 4020' (754') | 4020' (754') |
| | | R1500m | R1500m | R2700m | R2700m |
| | ALS out | R1500m | R1500m | R3500m | R3500m |
| | NDB | 4020' (754') | 4020' (754') | 4020' (754') | 4020' (754') |
| | | R2900m | R2900m | R3100m | R3100m |
| ALS out | | R3700m | R3700m | R3900m | R3900m |

① Continuous Descent Final Approach.

| CIRCLE-TO-LAND | A | B | C | D |
|---|--------------------------|--------------------------|--------------------------|--------------------------|
| ② After ILS 1 31R | 3960' (694') V1500m | 3960' (694') V1600m | 3960' (694') V2400m | 3970' (704') V3600m |
| ③ CIRCLING NDB or after ILS 3 31R, NDB 31 L/R | 4200' (934') ④ V1500m | 4200' (934') ④ V1600m | 4200' (934') ④ V2400m | 4200' (934') ④ V3600m |
| ② After ILS 2 31R, and VOR procedures | 3900' (634') ④ V1500m | 3900' (634') ④ V1600m | 3900' (634') ④ V2400m | 3970' (704') V3600m |

② Not authorized clockwise between R-150 & R-300.

③ Not authorized clockwise between 150° from NDB & 300° from NDB.

④ or higher minimums of preceding straight-in approach.

TAKE-OFF

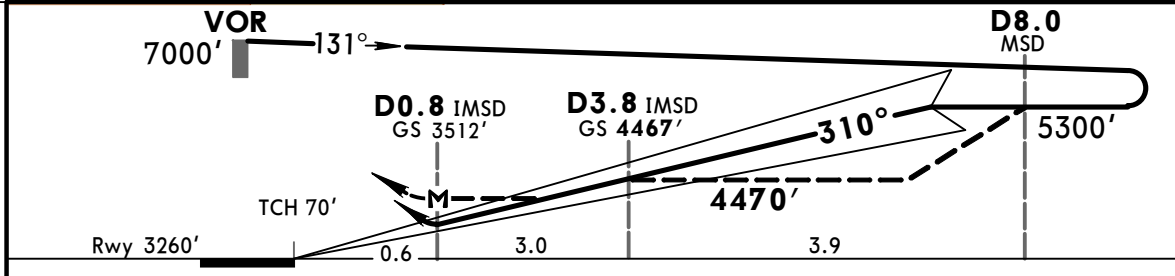
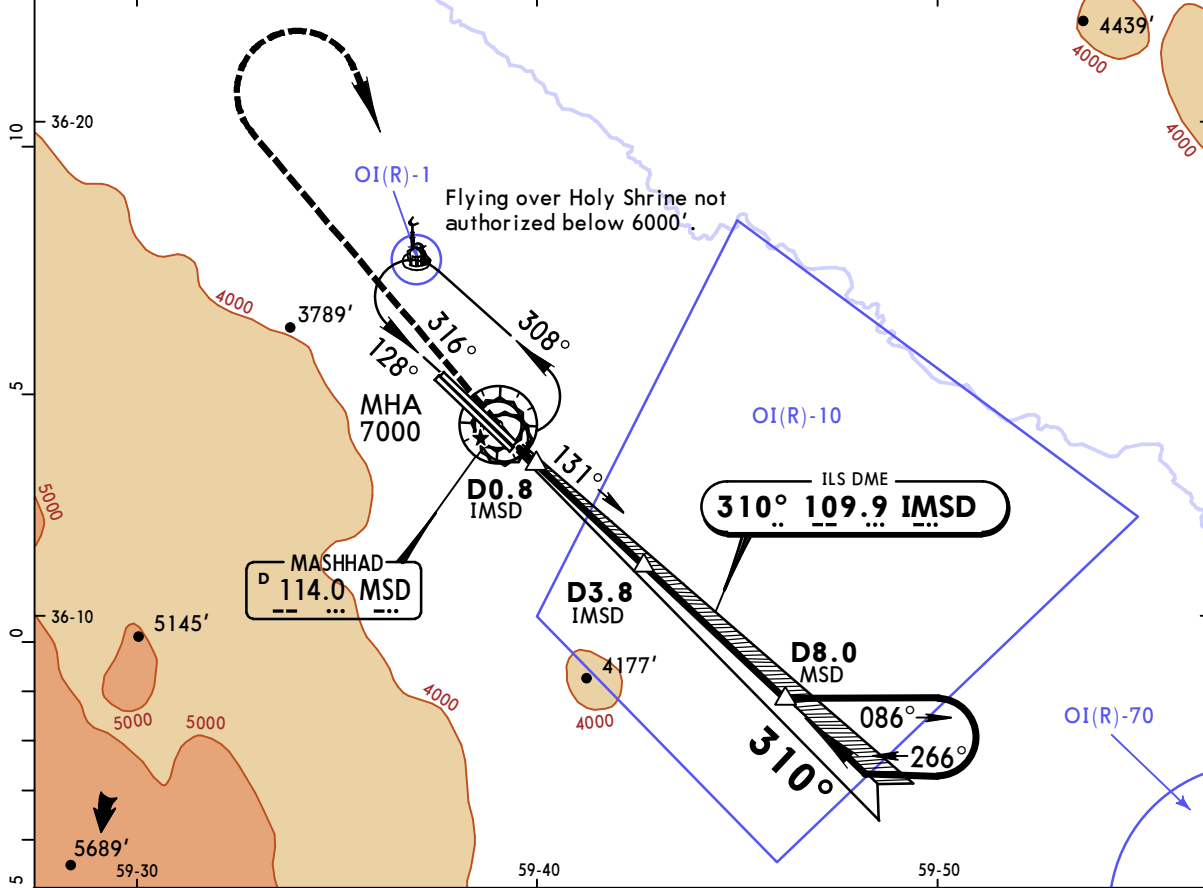
| | RL & RCLM | NIL (DAY only) |
|---|-----------|-------------------|
| A | | |
| B | | |
| C | 400m | 500m |
| D | | |

OIMM/MHD
SHAHID HASHEMI NEJAD INTL

JEPPESEN
 8 SEP 17 **(11-1)** **Eff 14 Sep**

MASHHAD, IRAN
ILS 1 Rwy 31R

| | | | | | | | |
|---|----------------------------------|---|-------------------------------------|-------------------------------|--------------|------------------------|-------------|
| ATIS 126.4 | | MASHHAD Approach (R) 127.3 | | MASHHAD Tower 118.1 | | Ground 121.7 | |
| LOC IMSD 109.9 | Final Apch Crs 310° | GS D3.8 IMSD 4467' (1207') | ILS DA(H) 3512' (252') | Apt Elev 3266' | Rwy 3260' | | |
| MISSED APCH: Turn RIGHT and climb on R-316 MSD to 5500', then turn RIGHT to rejoin holding at 7000'. | | | | | | | MSA MSD VOR |
| Alt Set: hPa | | Rwy Elev: 114 hPa | | Trans level: By ATC | | Trans alt: 8000' | |



| | | | | | | | | | |
|-------------------|-------|-----|-----|-----|-----|-----|--|--|-----|
| Gnd speed-Kts | 70 | 90 | 100 | 120 | 140 | 160 | | 5500' MSD on 114.0 RT R-316 | |
| ILS GS or | 3.00° | 372 | 478 | 531 | 637 | 743 | | | 849 |
| LOC Descent Angle | | | | | | | | | |
| MAP at D0.8 IMSD | | | | | | | | | |

| STRAIGHT-IN LANDING RWY 31R | | | | CIRCLE-TO-LAND | |
|-----------------------------|----------------------|----------------------------|------------------------|--|---------------------------|
| ILS | | LOC (GS out) | | Not authorized clockwise between R-150 & R-300 | |
| DA(H) 3512' (252') | | MDA(H) 3630' (370') | | MDA(H) | |
| FULL | | ALS out | | Max Kts | |
| A | | | | 100 | 3960' (694') 1600m |
| B | RVR 720m VIS 800m | | 1000m | 135 | 3960' (694') 1600m |
| C | | 1200m | RVR 1500m VIS 1600m | 180 | 3960' (694') 3200m |
| D | | 1200m | RVR 1800m VIS 2000m | 205 | 3960' (694') 3600m |

PANS OPS

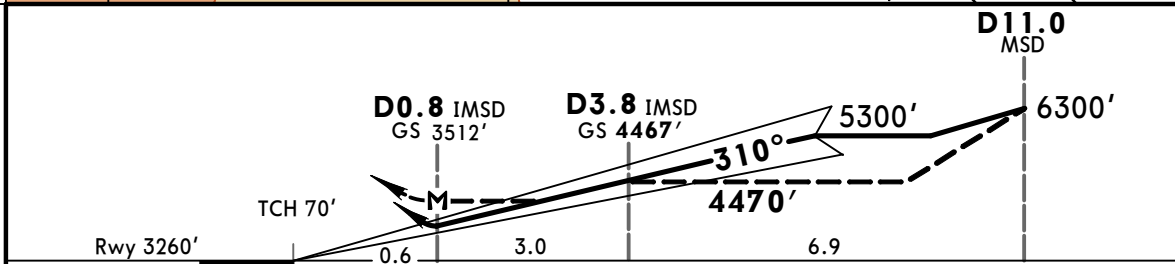
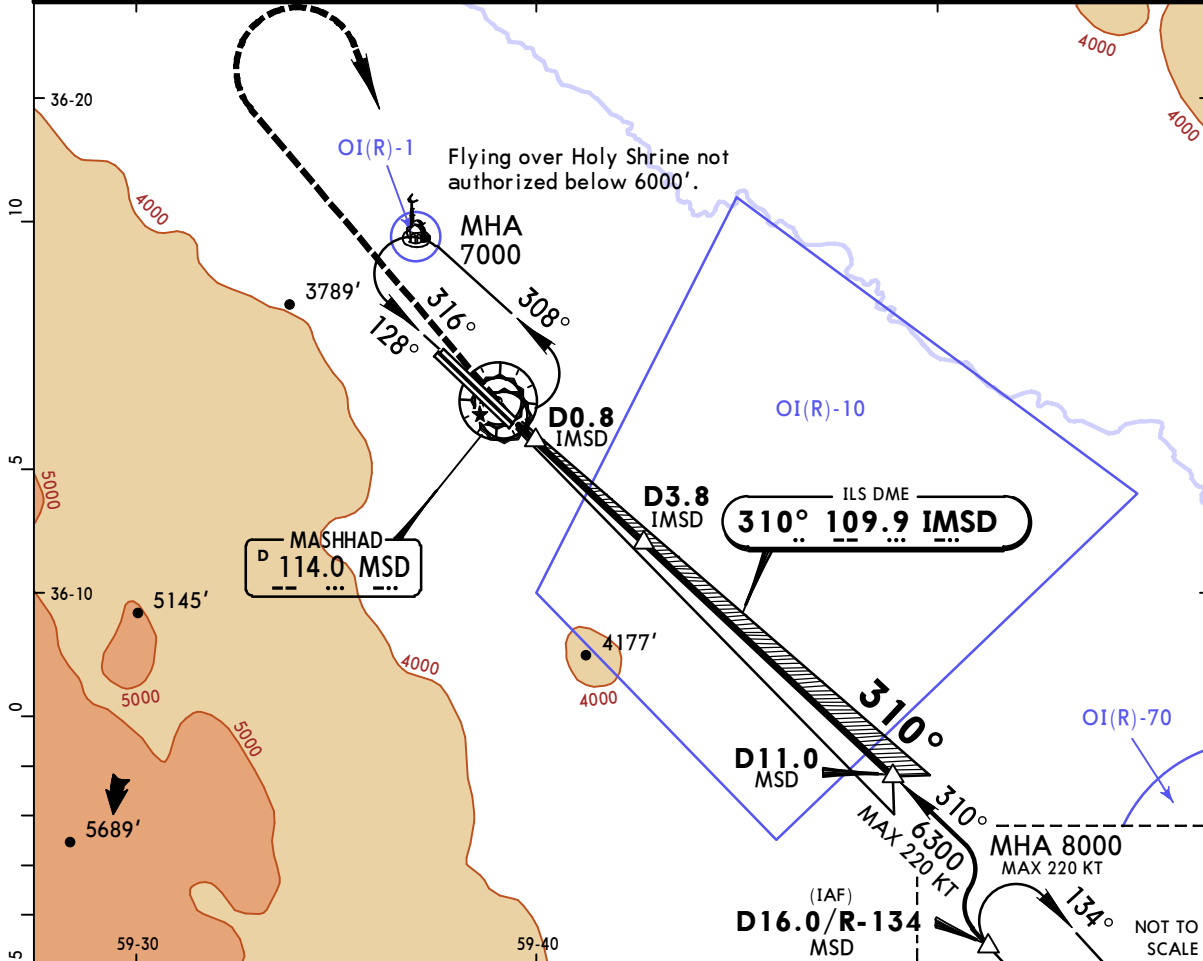
CHANGES: Note.

OIMM/MHD
SHAHID HASHEMI NEJAD INTL

JEPPESSEN
 8 SEP 17 **(11-2)** **Eff 14 Sep**

MASHHAD, IRAN
ILS 2 Rwy 31R

| | | | | | | | |
|---|----------------------------------|---|-------------------------------------|-------------------------------|--------------|------------------------|-------------|
| ATIS 126.4 | | MASHHAD Approach (R) 127.3 | | MASHHAD Tower 118.1 | | Ground 121.7 | |
| LOC IMSD 109.9 | Final Apch Crs 310° | GS D3.8 IMSD 4467' (1207') | ILS DA(H) 3512' (252') | Apt Elev 3266' | Rwy 3260' | | |
| MISSED APCH: Turn RIGHT and climb on R-316 MSD to 5500', then turn RIGHT to rejoin holding at 7000'. | | | | | | | |
| Alt Set: hPa | | Rwy Elev: 114 hPa | | Trans level: By ATC | | Trans alt: 8000' | |
| | | | | | | | MSA MSD VOR |



| | | | | | | | | | |
|--------------------------------|-------|-----|-----|-----|-----|-----|--|--|-----|
| Gnd speed-Kts | 70 | 90 | 100 | 120 | 140 | 160 | | 5500' MSD on 114.0 RT R-316 | |
| ILS GS or LOC Descent Angle | 3.00° | 372 | 478 | 531 | 637 | 743 | | | 849 |
| MAP at D0.8 IMSD | | | | | | | | | |

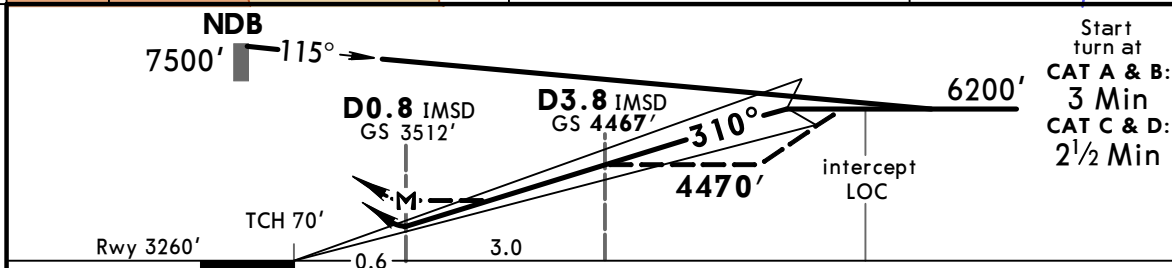
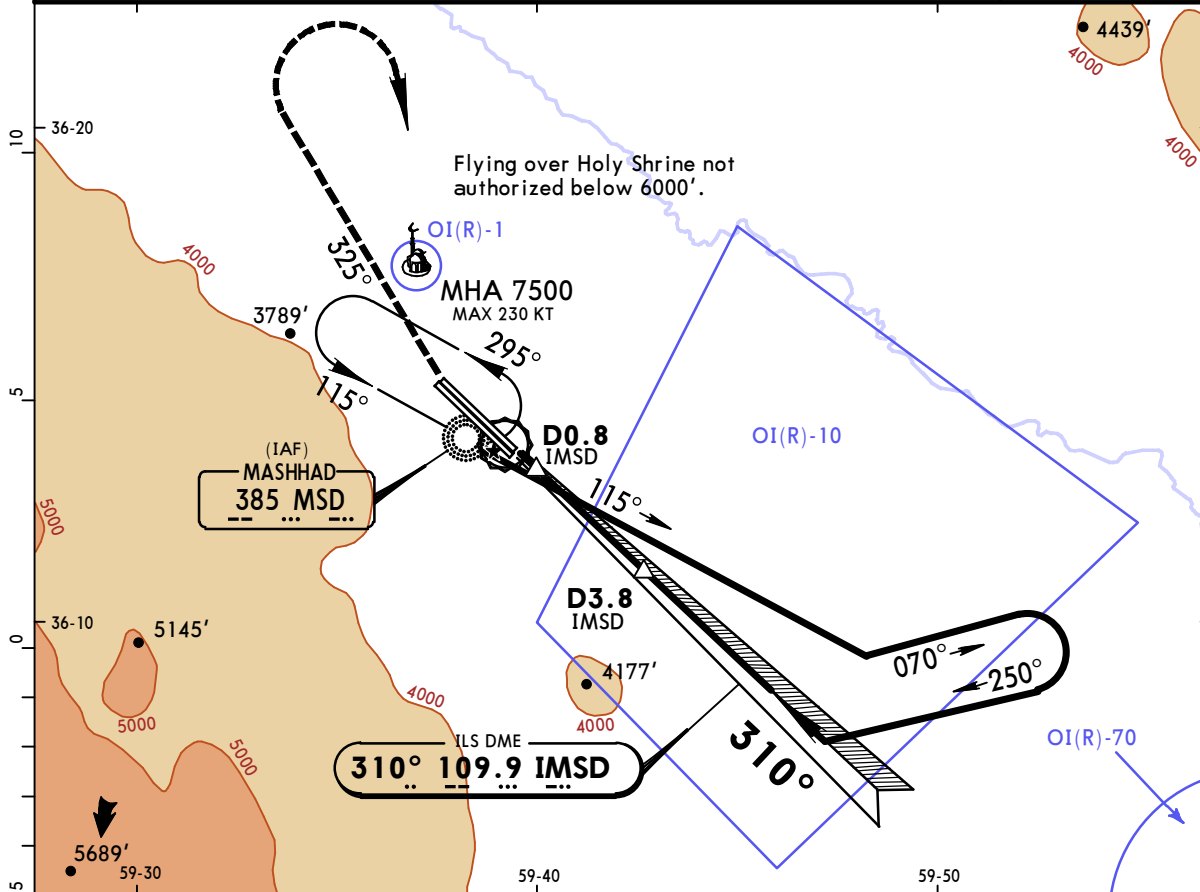
| | | | | | | | |
|------------------------------------|----------------------|----------------------------|-------|--|---------------------|--|-------|
| STRAIGHT-IN LANDING RWY 31R | | | | CIRCLE-TO-LAND | | | |
| ILS | | LOC (GS out) | | Not authorized clockwise between R-150 & R-300 | | | |
| DA(H) 3512' (252') | | MDA(H) 3630' (370') | | Max Kts | | | |
| FULL | | ALS out | | MDA(H) | | | |
| A | | | | 100 | 3900' (634') | | 1600m |
| B | RVR 720m VIS 800m | | | 135 | 3900' (634') | | 2800m |
| C | | 1200m | | 180 | 3900' (634') | | 3600m |
| D | | | 1200m | 205 | 3960' (694') | | 3600m |

OIMM/MHD
SHAHID HASHEMI NEJAD INTL

JEPPESEN
 8 SEP 17 (11-3) Eff 14 Sep

MASHHAD, IRAN
ILS 3 Rwy 31R

| | | | | | | | |
|--|----------------------------------|---|-------------------------------------|-------------------------------|--|------------------------|----------------|
| ATIS 126.4 | | MASHHAD Approach (R) 127.3 | | MASHHAD Tower 118.1 | | Ground 121.7 | |
| LOC IMSD 109.9 | Final Apch Crs 310° | GS D3.8 IMSD 4467' (1207') | ILS DA(H) 3512' (252') | Apt Elev 3266' Rwy 3260' | | | |
| MISSED APCH: Climb STRAIGHT AHEAD to 4000', then turn RIGHT and climb on 325° to 5500', then turn RIGHT to NDB and rejoin holding at 7500'. | | | | | | | |
| Alt Set: hPa | | Rwy Elev: 114 hPa | | Trans level: By ATC | | Trans alt: 8000' | |
| Initial approach restricted to MAX 220 KT. | | | | | | | MSA MSD NDB |



| | | | | | | | | |
|--------------------------------|-------|-----|-----|-----|-----|-----|--|-----|
| Gnd speed-Kts | 70 | 90 | 100 | 120 | 140 | 160 | | |
| ILS GS or LOC Descent Angle | 3.00° | 372 | 478 | 531 | 637 | 743 | | 849 |
| MAP at D0.8 IMSD | | | | | | | | |

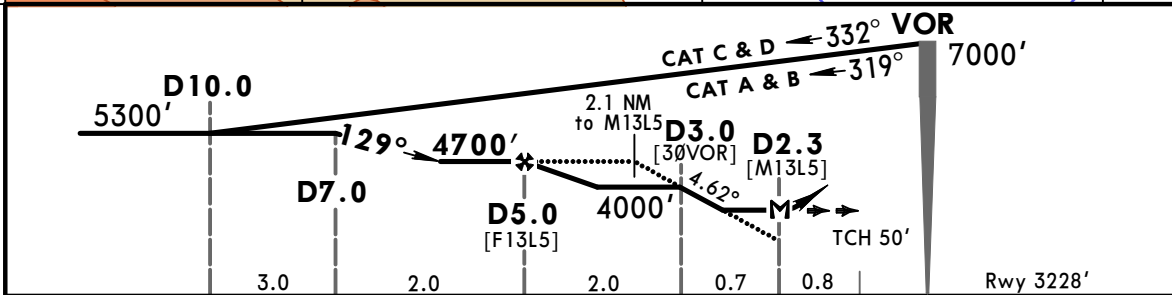
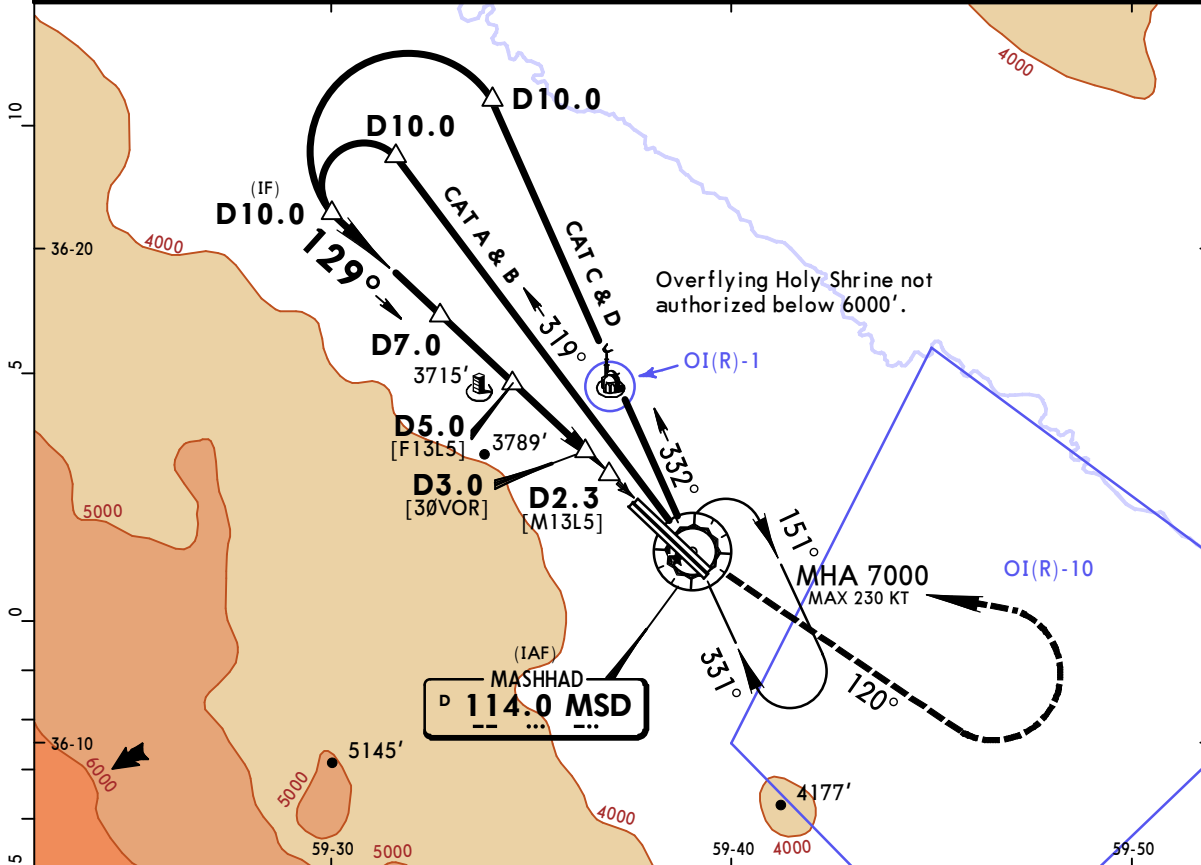
| STRAIGHT-IN LANDING RWY 31R | | | | CIRCLE-TO-LAND | |
|-----------------------------|----------------------|---------------------|------------------------|--|--------------|
| ILS | | LOC (GS out) | | Not authorized clockwise between 150° from NDB & 300° from NDB | |
| DA(H) 3512' (252') | | MDA(H) 4020' (760') | | MDA(H) | |
| FULL | ALS out | | ALS out | Max Kts | |
| A | | 1000m | RVR 1500m VIS 1600m | 100 | 4200' (934') |
| B | | 1200m | RVR 1800m VIS 2000m | 135 | 2000m |
| C | RVR 720m VIS 800m | 1200m | 2800m | 180 | 4200' (934') |
| D | | | 3200m | 205 | 4200' (934') |

OIMM/MHD
SHAHID HASHEMI NEJAD INTL

JEPPESEN
 8 SEP 17
 Eff 14 Sep (13-1)

MASHHAD, IRAN
VOR DME 5 Rwy 13L

| | | | | | | | |
|--|----------------------------------|---|-------------------------------|-------------------------------|-----------|------------------------|--|
| ATIS 126.4 | | MASHHAD Approach (R) 127.3 | | MASHHAD Tower 118.1 | | Ground 121.7 | |
| VOR MSD 114.0 | Final Apch Crs 129° | Minimum Alt D5.0 4700' (1472') | MDA(H) 3800' (572') | Apt Elev 3266' | Rwy 3228' | | |
| MISSED APCH: Climb STRAIGHT AHEAD to VOR, then climb on R-120 to 5500', then turn LEFT and rejoin holding at 7000'. | | | | | | | |
| Alt Set: hPa | | Rwy Elev: 113 hPa | | Trans level: By ATC | | Trans alt: 8000' | |
| Initial approach restricted to MAX 220 KT. | | | | | | MSA MSD VOR | |



| | | | | | | |
|---------------------|-----|-----|-----|-----|------|------|
| Gnd speed-Kts | 70 | 90 | 100 | 120 | 140 | 160 |
| Descent Angle 4.62° | 573 | 737 | 818 | 982 | 1146 | 1309 |
| MAP at D2.3 | | | | | | |

ALS
PAPI

MSD 114.0 5500' on 114.0
LT R-120

STRAIGHT-IN LANDING RWY 13L

MDA(H) **3800'** (572')

ALS out

CIRCLE-TO-LAND

Not authorized clockwise between R-150 & R-300

Max Kts

MDA(H)

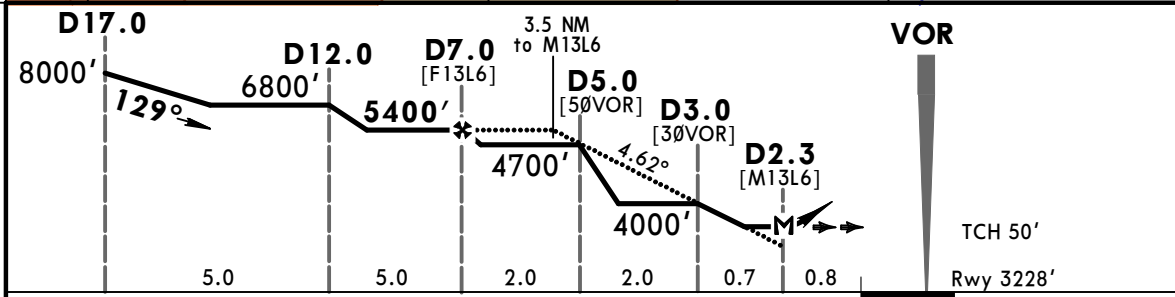
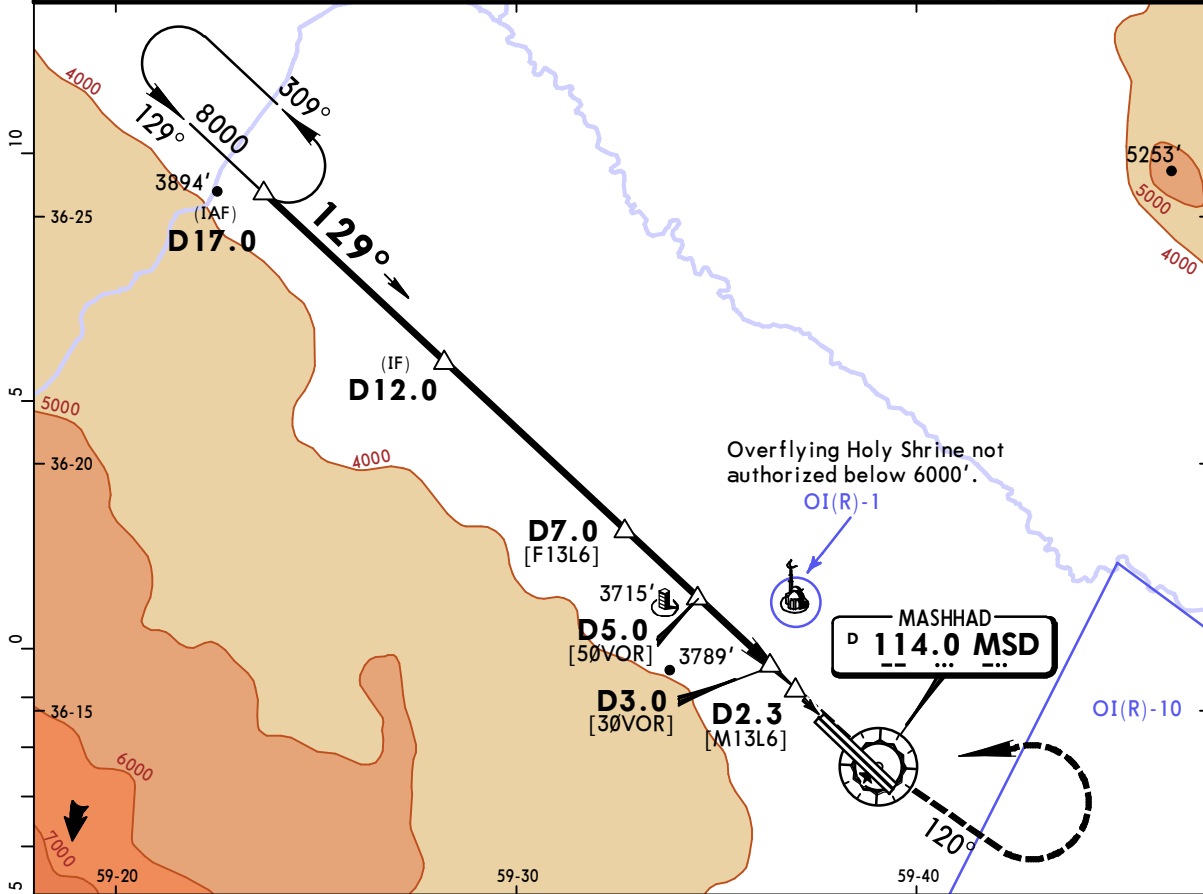
| | | | | | |
|-----------------|---|------------------------|-----|--------------|-------|
| PANS OPS | A | RVR 1500m VIS 1600m | 100 | 3900' (634') | 1600m |
| | B | | 135 | 3900' (634') | 2800m |
| | C | 2400m | 180 | 3900' (634') | 3600m |
| | D | 2800m | 205 | 3960' (694') | 3600m |

OIMM/MHD
SHAHID HASHEMI NEJAD INTL

JEPPESEN
 8 SEP 17
Eff 14 Sep 13-2

MASHHAD, IRAN
VOR DME 6 Rwy 13L

| | | | | | | | |
|---|----------------------------------|---|-------------------------------|-------------------------------|-----------|------------------------|--|
| ATIS 126.4 | | MASHHAD Approach (R) 127.3 | | MASHHAD Tower 118.1 | | Ground 121.7 | |
| VOR MSD 114.0 | Final Apch Crs 129° | Minimum Alt D7.0 5400' (2172') | MDA(H) 3800' (572') | Apt Elev 3266' | Rwy 3228' | | |
| MISSED APCH: Climb STRAIGHT AHEAD to VOR, then climb on R-120 to 4500', then turn LEFT to VOR and rejoin holding at 8000'. | | | | | | | |
| Alt Set: hPa | | Rwy Elev: 113 hPa | | Trans level: By ATC | | Trans alt: 8000' | |
| | | | | | | MSA MSD VOR | |



| | | | | | | | | | | | |
|---------------|-------|-----|-----|-----|-----|------|-------------|---------------------|-------|------------------------|--------------------|
| Gnd speed-Kts | 70 | 90 | 100 | 120 | 140 | 160 | ALS PAPI | MSD 114.0 | 4500' | MSD on 114.0 | LT R-120 |
| Descent Angle | 4.62° | 573 | 737 | 818 | 982 | 1309 | | | | | |
| MAP at D2.3 | | | | | | | | | | | |

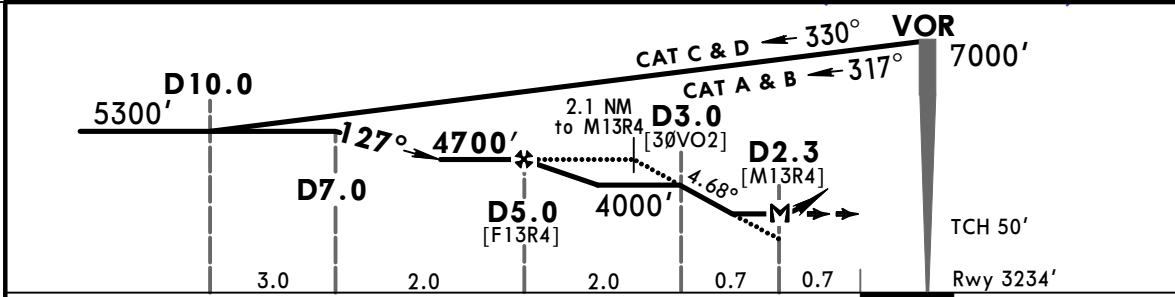
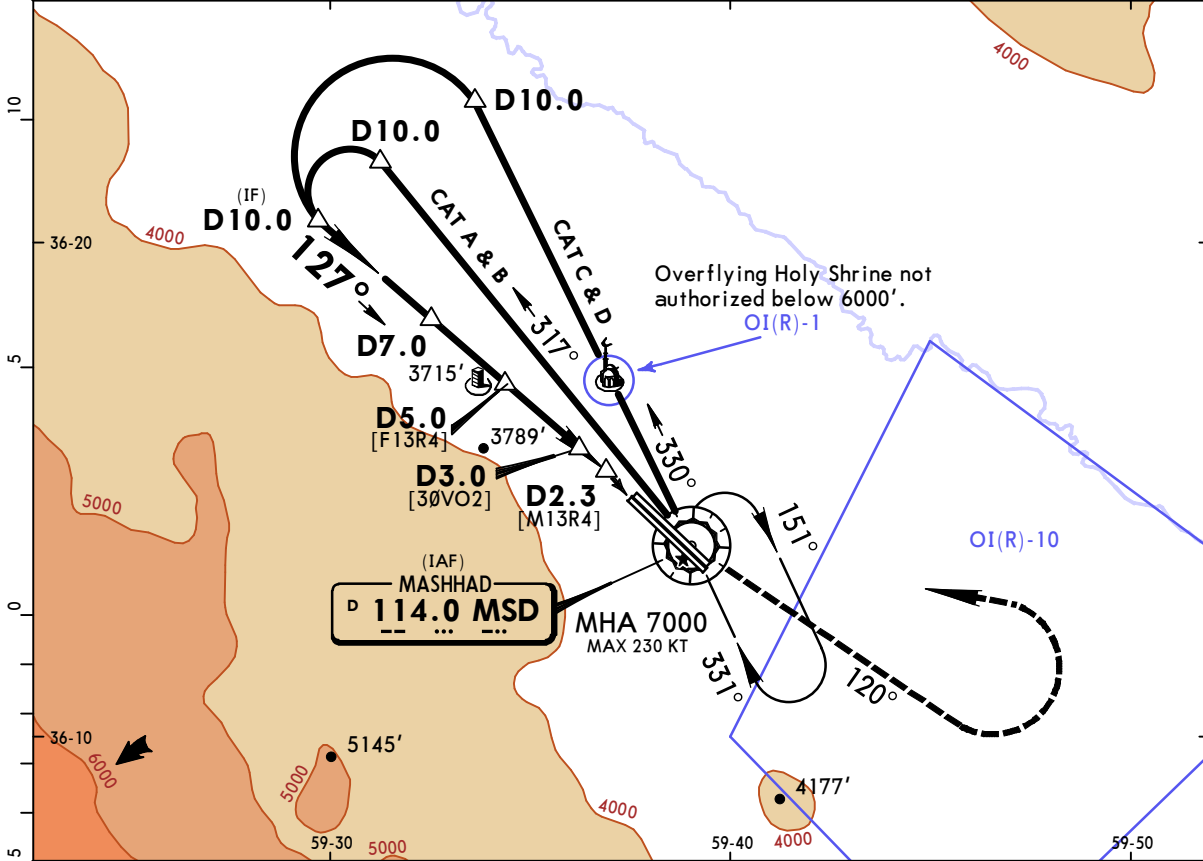
| | | | | | | | | | | | |
|-----------------------------|---|-----------|--|--|--|--|--------------|--|-------|--|--|
| STRAIGHT-IN LANDING RWY 13L | | | | | | CIRCLE-TO-LAND Not authorized clockwise between R-150 & R-300 | | | | | |
| MDA(H) 3800' (572') | | | | | | ALS out | | | | | |
| PANS OPS | A | RVR 1500m | | | | Max Kts | MDA(H) | | | | |
| | B | VIS 1600m | | | | 100 | 3900' (634') | | 1600m | | |
| | C | 2400m | | | | 135 | 3900' (634') | | 2800m | | |
| | D | 2800m | | | | 180 | 3900' (634') | | 2800m | | |
| | | 2800m | | | | 205 | 3960' (694') | | 3600m | | |

OIMM/MHD
SHAHID HASHEMI NEJAD INTL

JEPPESEN
 8 SEP 17
 Eff 14 Sep **(13-3)**

MASHHAD, IRAN
VOR DME 4 Rwy 13R

| | | | | | |
|--|----------------------------------|--|-------------------------------|-------------------------------|------------------------|
| ATIS 126.4 | | MASHHAD Approach (R) 127.3 | | MASHHAD Tower 118.1 | Ground 121.7 |
| VOR MSD 114.0 | Final Apch Crs 127° | Minimum Alt D5.0 4700' (1466') | MDA(H) 3800' (566') | Apt Elev 3266' Rwy 3234' | |
| MISSED APCH: Climb STRAIGHT AHEAD to VOR, then climb on R-120 to 5500', then turn LEFT and rejoin holding at 7000'. | | | | | |
| Alt Set: hPa | | Rwy Elev: 113 hPa | Trans level: By ATC | Trans alt: 8000' | |
| Initial approach restricted to MAX 220 KT. | | | | | MSA MSD VOR |



| | | | | | | | | | | | |
|---------------|-------|-----|-----|-----|-----|------|-----|---------------------|-------|------------------------|-------|
| Gnd speed-Kts | 70 | 90 | 100 | 120 | 140 | 160 | ALS | MSD 114.0 | 5500' | MSD on 114.0 | R-120 |
| Descent Angle | 4.68° | 580 | 746 | 829 | 995 | 1161 | | | | | |
| MAP at D2.3 | | | | | | | | | | | |

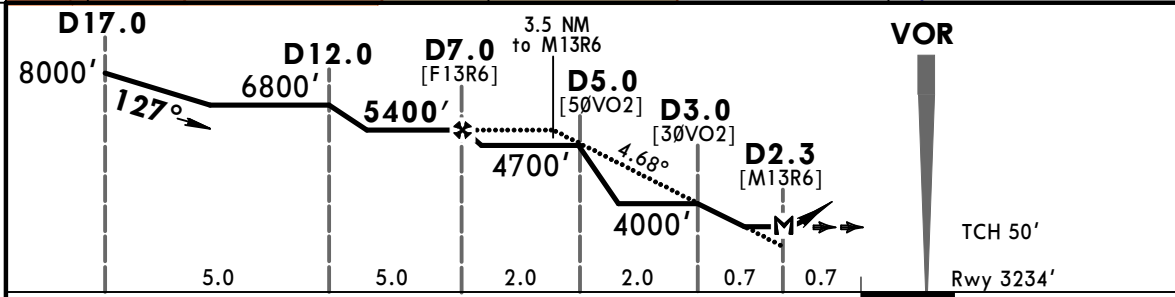
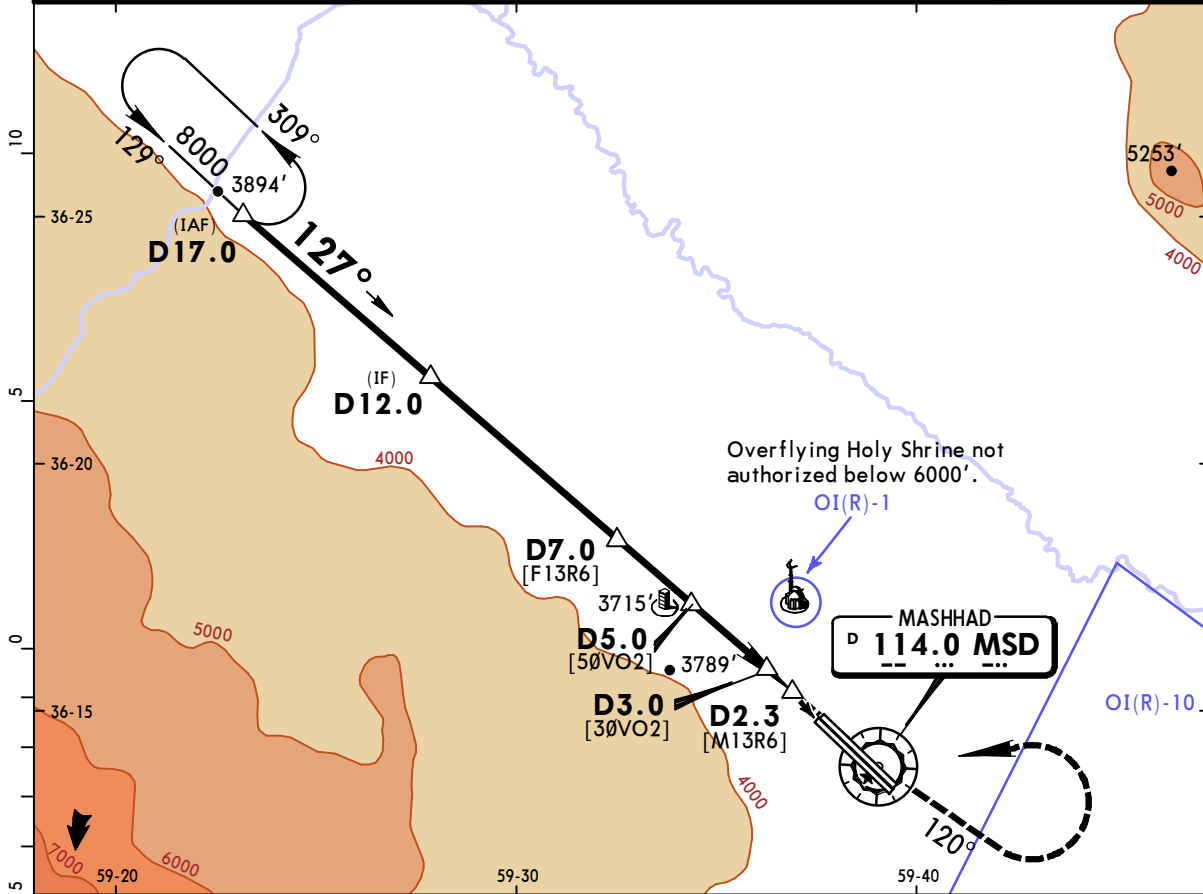
| | | | | | | | |
|------------------------------------|-----------|--|--|--|--------------|--|-------|
| STRAIGHT-IN LANDING RWY 13R | | | | CIRCLE-TO-LAND | | | |
| MDA(H) 3800' (566') | | | | Not authorized clockwise between R-150 & R-300 | | | |
| ALS out | | | | Max Kts | | | |
| A | RVR 1500m | | | 100 | 3900' (634') | | 1600m |
| B | VIS 1600m | | | 135 | 3900' (634') | | 2800m |
| C | 2400m | | | 180 | 3900' (634') | | 3600m |
| D | 2800m | | | 205 | 3960' (694') | | 3600m |

OIMM/MHD
SHAHID HASHEMI NEJAD INTL

JEPPESEN
 8 SEP 17
Eff 14 Sep (13-4)

MASHHAD, IRAN
VOR DME 6 Rwy 13R

| | | | | | | | |
|---|----------------------------------|---|-------------------------------|-------------------------------|-----------|------------------------|-------------|
| ATIS 126.4 | | MASHHAD Approach (R) 127.3 | | MASHHAD Tower 118.1 | | Ground 121.7 | |
| VOR MSD 114.0 | Final Apch Crs 127° | Minimum Alt D7.0 5400' (2166') | MDA(H) 3800' (566') | Apt Elev 3266' | Rwy 3234' | | |
| MISSED APCH: Climb STRAIGHT AHEAD to VOR, then climb on R-120 to 4500', then turn LEFT to VOR and rejoin holding at 8000'. | | | | | | | MSA MSD VOR |
| Alt Set: hPa | | Rwy Elev: 113 hPa | | Trans level: By ATC | | Trans alt: 8000' | |



| | | | | | | | | | |
|---------------|-------|-----|-----|-----|-----|------|-------------|---------------------|-----------------------------------|
| Gnd speed-Kts | 70 | 90 | 100 | 120 | 140 | 160 | ALS PAPI | MSD 114.0 | 4500' on LT R-120 |
| Descent Angle | 4.68° | 580 | 746 | 829 | 995 | 1326 | | | |
| MAP at D2.3 | | | | | | | | | |

| | | | | | | | | | | |
|-----------------------------|-----------|--|--|--|--|--------------|--|--|--|-------|
| STRAIGHT-IN LANDING RWY 13R | | | | | CIRCLE-TO-LAND Not authorized clockwise between R-150 & R-300 | | | | | |
| MDA(H) 3800' (566') | | | | | Max Kts | | | | | |
| ALS out | | | | | MDA(H) | | | | | |
| A | RVR 1500m | | | | 100 | 3900' (634') | | | | 1600m |
| B | VIS 1600m | | | | 135 | 3900' (634') | | | | 2800m |
| C | | | | | 180 | 3900' (634') | | | | 3600m |
| D | | | | | 205 | 3960' (694') | | | | 3600m |

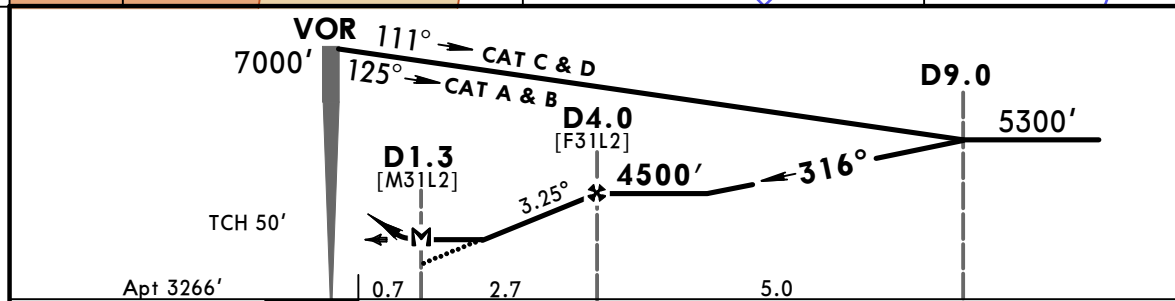
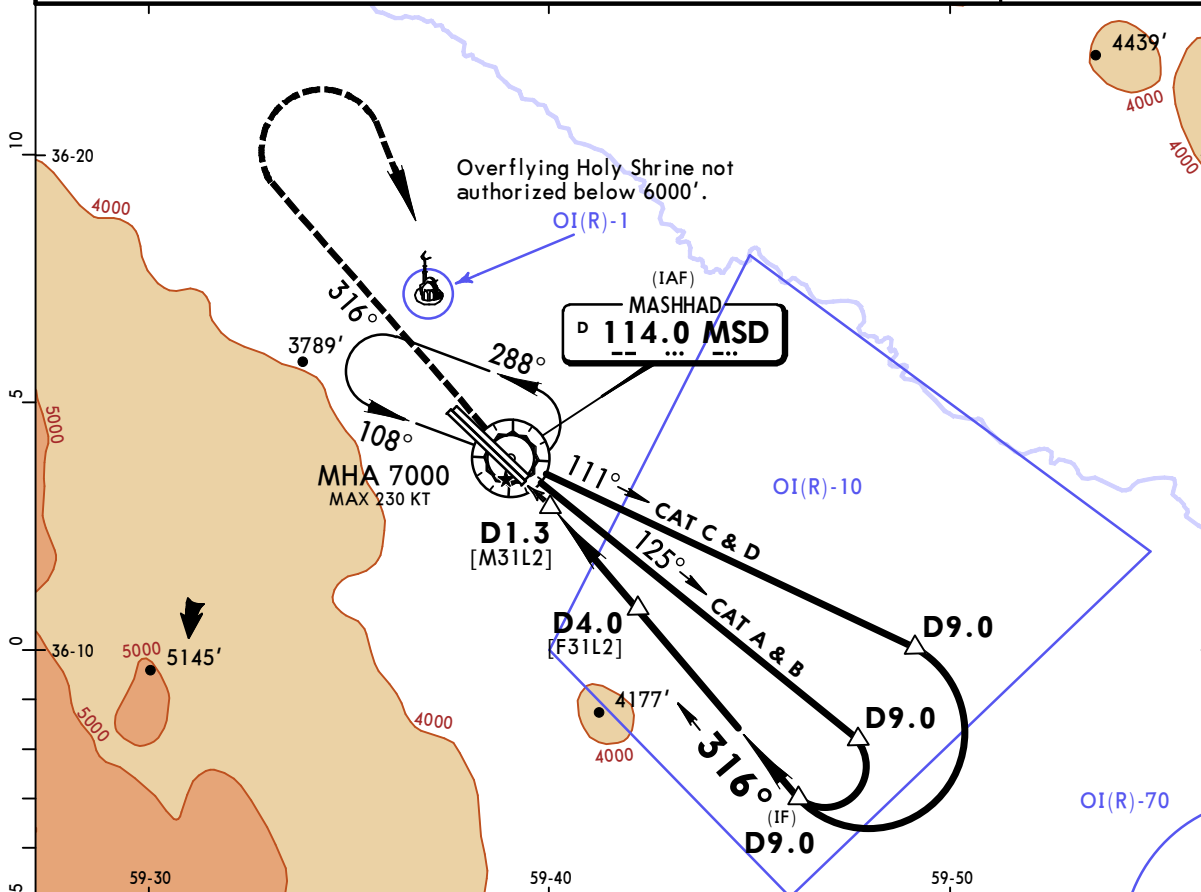
PANS OPS

OIMM/MHD
SHAHID HASHEMI NEJAD INTL

JEPPESEN
 8 SEP 17
Eff 14 Sep (13-5)

MASHHAD, IRAN
VOR DME 2 Rwy 31L

| | | | | | | | |
|---|----------------------------------|---|-------------------------------|-------------------------------|--|------------------------|--|
| ATIS 126.4 | | MASHHAD Approach (R) 127.3 | | MASHHAD Tower 118.1 | | Ground 121.7 | |
| VOR MSD 114.0 | Final Apch Crs 316° | Minimum Alt D4.0 4500' (1234') | MDA(H) 3630' (364') | Apt Elev 3266' | | | |
| MISSED APCH: Climb STRAIGHT AHEAD to VOR, then climb on R-316 to 5500', then turn RIGHT and rejoin holding at 7000'. | | | | | | | |
| Alt Set: hPa | | Apt Elev: 114 hPa | | Trans level: By ATC | | Trans alt: 8000' | |
| Initial approach restricted to MAX 220 KT. | | | | | | MSA MSD VOR | |



| | | | | | | | | | | | |
|---------------|-------|-----|-----|-----|-----|-----|--------|-----|--------------|-----|--------------|
| Gnd speed-Kts | 70 | 90 | 100 | 120 | 140 | 160 | PAPI-L | MSD | 5500' | MSD | |
| Descent Angle | 3.25° | 403 | 518 | 575 | 690 | 920 | | ↑ | 114.0 | ↑ | 114.0 |
| MAP at D1.3 | | | | | | | | | | | R-316 |

| | | | | | | | |
|-----------------------------|------------------------|--|--|--|-------------|--|-------|
| STRAIGHT-IN LANDING RWY 31L | | | | CIRCLE-TO-LAND Not authorized clockwise between R-150 & R-300 | | | |
| MDA(H) 3630' (364') | | | | Max Kts | | | |
| A | | | | 100 | 3900'(634') | | 1600m |
| B | RVR 1500m VIS 1600m | | | 135 | 3900'(634') | | 2800m |
| C | | | | 180 | 3900'(634') | | 3600m |
| D | RVR 1800m VIS 2000m | | | 205 | 3960'(694') | | 3600m |

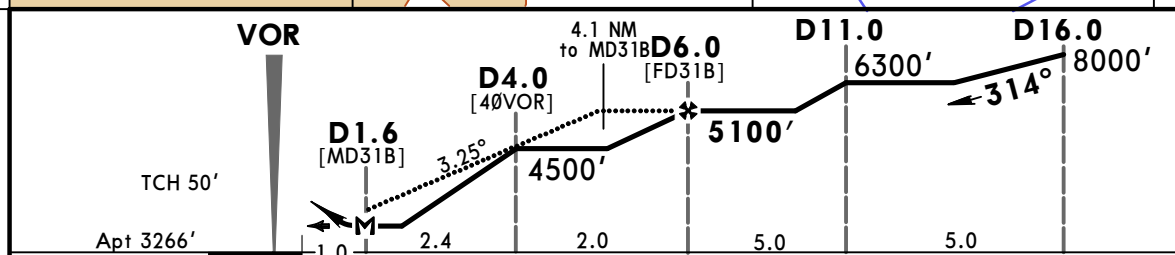
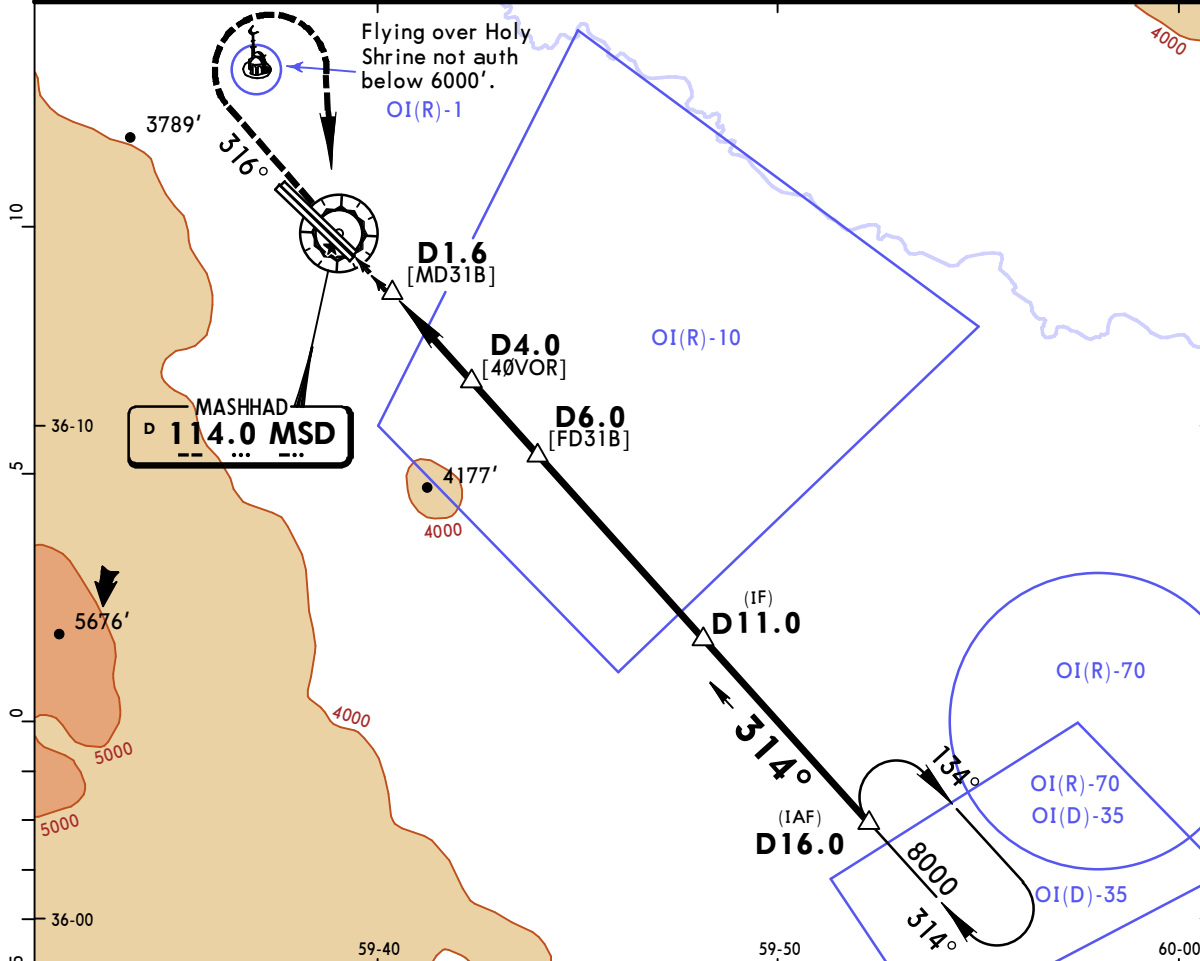
PANS OPS

OIMM/MHD
SHAHID HASHEMI NEJAD INTL

JEPPESEN
 8 SEP 17
 Eff 14 Sep **(13-6)**

MASHHAD, IRAN
VOR DME 3 Rwy 31L

| | | | | | | | |
|--|----------------------------------|---|-------------------------------|-------------------------------|--|------------------------|--|
| ATIS 126.4 | | MASHHAD Approach (R) 127.3 | | MASHHAD Tower 118.1 | | Ground 121.7 | |
| VOR MSD 114.0 | Final Apch Crs 314° | Minimum Alt D6.0 5100' (1834') | MDA(H) 3630' (364') | Apt Elev 3266' | | | |
| MISSED APCH: Climb STRAIGHT AHEAD to VOR, then climb on R-316 to 5500', then turn RIGHT to VOR and rejoin holding at 8000'. | | | | | | | |
| Alt Set: hPa | | Apt Elev: 114 hPa | | Trans level: By ATC | | Trans alt: 8000' | |
| | | | | | | MSA MSD VOR | |



| | | | | | | | | | | |
|---------------|-------|-----|-----|-----|-----|-----|--------|-----|-------|--------------|
| Gnd speed-Kts | 70 | 90 | 100 | 120 | 140 | 160 | PAPI-L | MSD | 5500' | MSD |
| Descent Angle | 3.25° | 403 | 518 | 575 | 690 | 920 | | ↑ | 114.0 | RT |
| MAP at D1.6 | | | | | | | | | | R-316 |

| | | | | | | | |
|-----------------------------|------------------------|--|--|--|---------------------|--|-------|
| STRAIGHT-IN LANDING RWY 31L | | | | CIRCLE-TO-LAND Not authorized clockwise between R-150 & R-300 | | | |
| MDA(H) 3630' (364') | | | | Max Kts | | | |
| A | | | | 100 | 3900' (634') | | 1600m |
| B | RVR 1500m VIS 1600m | | | 135 | 3900' (634') | | 2800m |
| C | | | | 180 | 3900' (634') | | 3600m |
| D | RVR 1800m VIS 2000m | | | 205 | 3960' (694') | | 3600m |

PANS OPS

CHANGES: Apt elevation. Lights. Circling minimums.

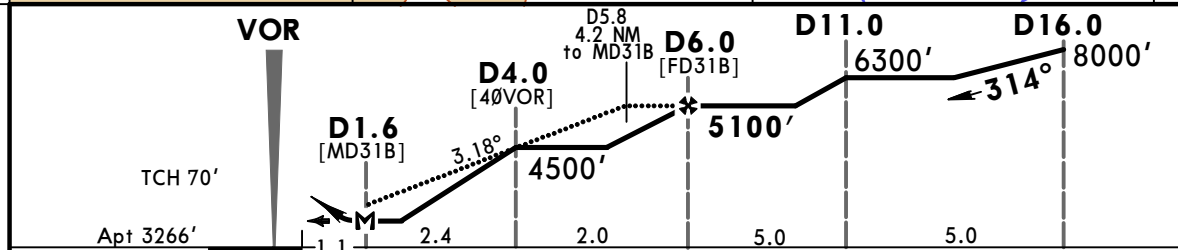
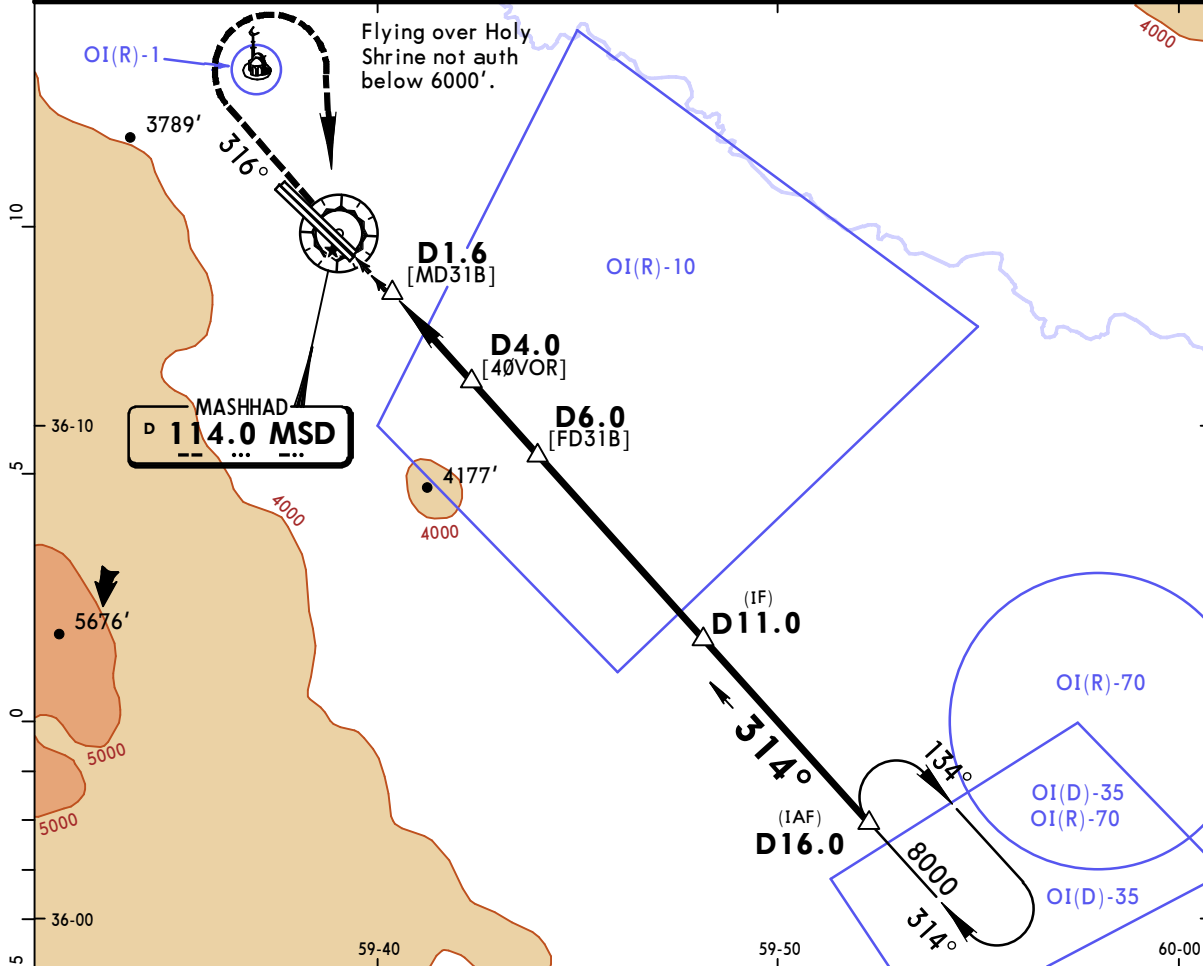
© JEPPESEN, 2001, 2017. ALL RIGHTS RESERVED.

OIMM/MHD
SHAHID HASHEMI NEJAD INTL

JEPPESEN
 8 SEP 17
Eff 14 Sep 13-8

MASHHAD, IRAN
VOR DME 3 Rwy 31R

| | | | | | | | |
|--|----------------------------------|---|-------------------------------|-------------------------------|--|------------------------|--|
| ATIS 126.4 | | MASHHAD Approach (R) 127.3 | | MASHHAD Tower 118.1 | | Ground 121.7 | |
| VOR MSD 114.0 | Final Apch Crs 314° | Minimum Alt D6.0 5100' (1834') | MDA(H) 3630' (364') | Apt Elev 3266' | | | |
| MISSED APCH: Climb STRAIGHT AHEAD to VOR, then climb on R-316 to 5500', then turn RIGHT to VOR and rejoin holding at 8000'. | | | | | | | |
| Alt Set: hPa | | Apt Elev: 114 hPa | | Trans level: By ATC | | Trans alt: 8000' | |
| | | | | | | MSA MSD VOR | |



| | | | | | | | | | | | |
|---------------|-------|-----|-----|-----|-----|-----|--|-----|-------|-------|-------|
| Gnd speed-Kts | 70 | 90 | 100 | 120 | 140 | 160 | | MSD | 5500' | MSD | |
| Descent Angle | 3.18° | 394 | 506 | 563 | 675 | 788 | | 900 | 114.0 | 5500' | 114.0 |
| MAP at D1.6 | | | | | | | | | ↑ | RT | R-316 |

| | | | | | | | |
|-----------------------------|------------------------|--|-------|--|--------------|-------|--|
| STRAIGHT-IN LANDING RWY 31R | | | | CIRCLE-TO-LAND | | | |
| MDA(H) 3630' (364') | | | | Not authorized clockwise between R-150 & R-300 | | | |
| ALS out | | | | Max Kts | MDA(H) | | |
| A | | | | 100 | 3900' (634') | 2000m | |
| B | 1200m | | | 135 | | | |
| C | | | 2000m | 180 | 3900' (634') | 2800m | |
| D | RVR 1500m VIS 1600m | | | 205 | 3960' (694') | 3600m | |

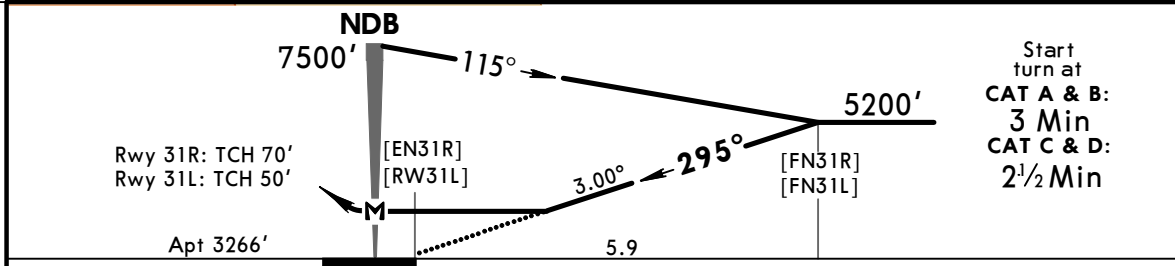
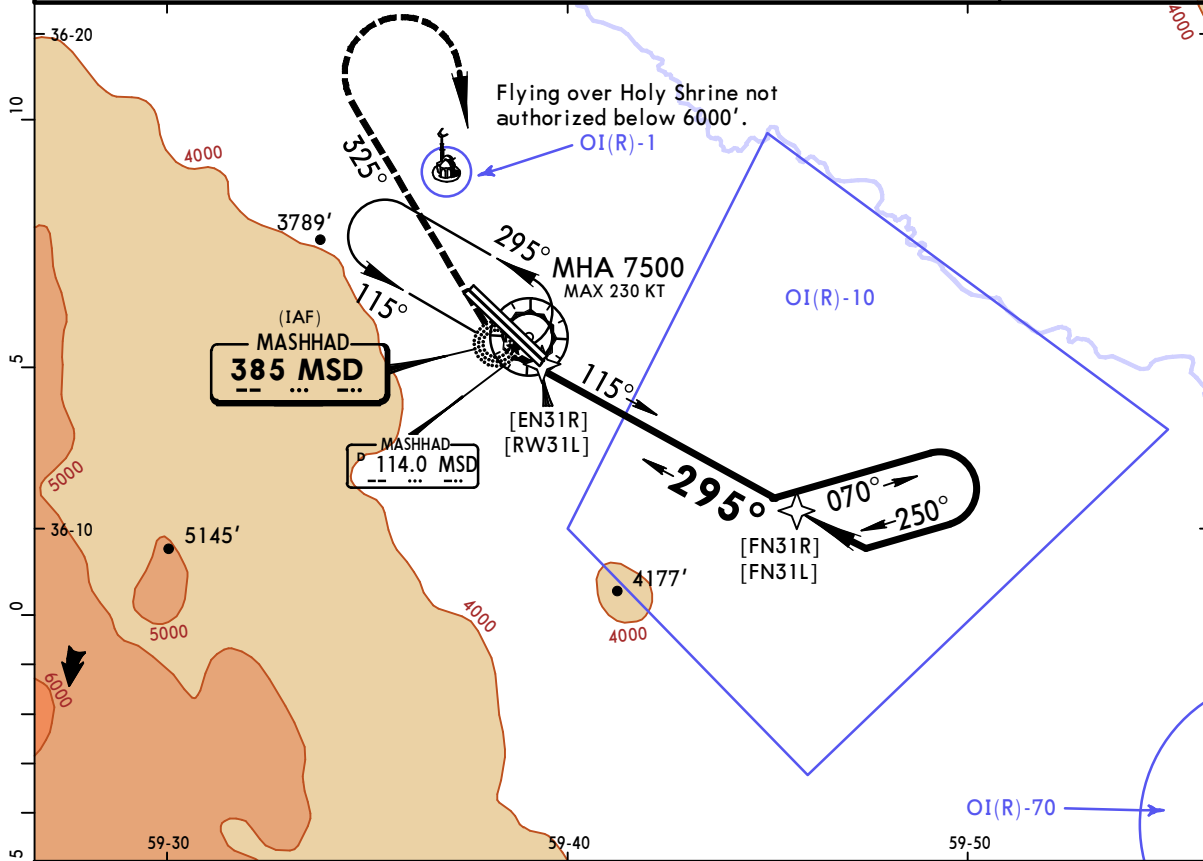
PANS OPS

OIMM/MHD
SHAHID HASHEMI NEJAD INTL

JEPPESEN
 8 SEP 17 **(16-1)** Eff 14 Sep

MASHHAD, IRAN
NDB Rwy 31L/R

| | | | | | | | |
|---|----------------------------------|--------------------------------------|-------------------------------|-------------------------------|--|------------------------|--|
| ATIS 126.4 | | MASHHAD Approach (R) 127.3 | | MASHHAD Tower 118.1 | | Ground 121.7 | |
| NDB MSD 385 | Final Apch Crs 295° | Minimum Alt No FAF | MDA(H) 4020' (754') | Apt Elev 3266' | | | |
| MISSED APCH: Turn RIGHT onto track 325° climbing to 5500', then turn RIGHT to rejoin holding at 7500'. | | | | | | | |
| Alt Set: hPa | | Apt Elev: 114 hPa | | Trans level: By ATC | | Trans alt: 8000' | |
| Initial approach restricted to MAX 185 KT. | | | | | | MSA MSD NDB | |



| | | | | | | | | |
|---------------|-------|-----|-----|-----|-----|-----|---------------------------------------|-----------------------|
| Gnd speed-Kts | 70 | 90 | 100 | 120 | 140 | 160 | Rwy 31L Rwy 31R PAPI - L IPAPI | 5500' onto 325° RT |
| Descent Angle | 3.00° | 372 | 478 | 531 | 637 | 743 | | |
| MAP at NDB | | | | | | | | |

| STRAIGHT-IN LANDING RWY | | | | CIRCLE-TO-LAND | | | |
|-------------------------|------------------------|---------------------|---------|--|--------------|--------------|--|
| 31L | | 31R | | Not authorized clockwise between 150° from NDB & 300° from NDB | | | |
| MDA(H) 4020' (754') | | MDA(H) 4020' (754') | | MDA(H) | | | |
| A | RVR 1500m VIS 1600m | 1200m | ALS out | Max Kts | 2000m | | |
| B | RVR 1800m VIS 2000m | | | RVR 1500m VIS 1600m | 100 | 4200' (934') | |
| C | 3600m | 2800m | 3600m | 180 | 4200' (934') | | |
| D | 4000m | 3600m | 4000m | 205 | 4200' (934') | | |

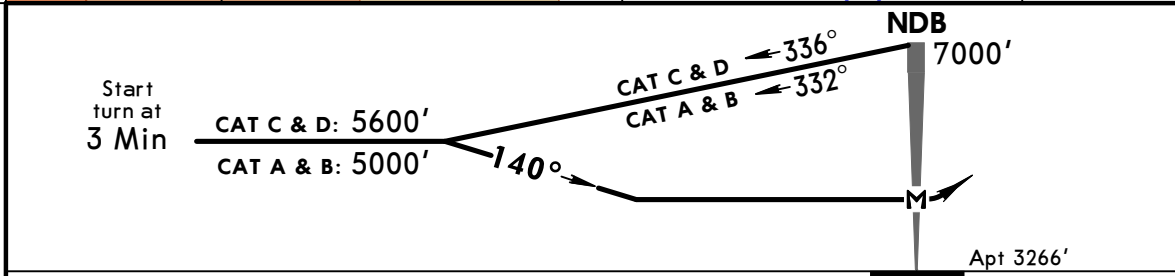
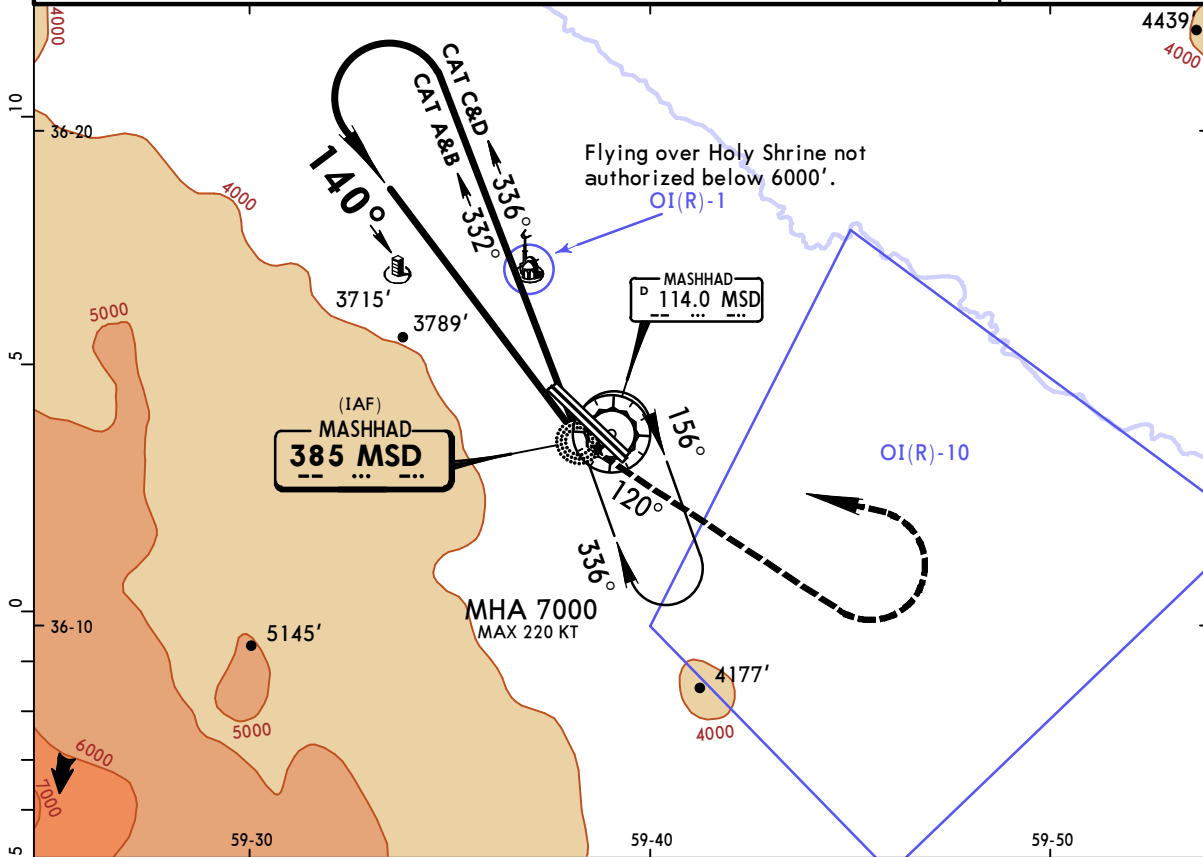
PANS OPS

OIMM/MHD
SHAHID HASHEMI NEJAD INTL

JEPPESEN
 8 SEP 17 **(16-2)** Eff 14 Sep

MASHHAD, IRAN
CIRCLING NDB

| | | | | | | | | |
|---|--------------------------|----------------------------------|--------------------------------------|---------------------|-------------------------------|------------------|------------------------|--|
| BRIEFING STRIP™ | ATIS 126.4 | | MASHHAD Approach (R) 127.3 | | MASHHAD Tower 118.1 | | Ground 121.7 | |
| | NDB MSD 385 | Final Apch Crs 140° | Minimum Alt No FAF | | MDA(H) 4200' (934') | Apt Elev 3266' | | |
| MISSED APCH: Turn LEFT onto track 120° climbing to 5500', then turn LEFT to rejoin holding at 7000'. | | | | | | | | |
| Alt Set: hPa | | Apt Elev: 114 hPa | | Trans level: By ATC | | Trans alt: 8000' | | |
| Initial approach restricted to MAX 185 KT. | | | | | | | | |



| | | | | | | | | | |
|------------|--|--|--|--|--|--|--|-----------------------------------|-------------------------------------|
| MAP at NDB | | | | | | | | Lighting - Refer to Airport Chart | 5500' onto 120° LT |
|------------|--|--|--|--|--|--|--|-----------------------------------|-------------------------------------|

| | | | | |
|----------|----------------|---------|--|-------|
| PANS OPS | CIRCLE-TO-LAND | | Not authorized clockwise between 150° from NDB & 300° from NDB | |
| | | Max Kts | MDA(H) | |
| | A | 100 | 4200' (934') | 2000m |
| | B | 135 | 4200' (934') | 4400m |
| | C | 180 | 4200' (934') | 4800m |
| | D | 205 | 4200' (934') | |